

LBR antibody - middle region

Rabbit Polyclonal Antibody

Catalog # AI12559

Product Information

Application	WB
Primary Accession	Q14739
Other Accession	NM_002296 , NP_002287
Reactivity	Human, Mouse, Rat, Rabbit, Zebrafish, Pig, Dog, Guinea Pig, Horse, Bovine, Yeast
Predicted Host	Human, Mouse, Rat, Zebrafish, Dog, Guinea Pig, Horse, Bovine
Clonality	Rabbit
Calculated MW	Polyclonal 70703

Additional Information

Gene ID	3930
Alias Symbol Other Names	DHCR14B, LMN2R, MGC9041, PHA Lamin-B receptor, Integral nuclear envelope inner membrane protein, LMN2R, LBR
Format	Liquid. Purified antibody supplied in 1x PBS buffer with 0.09% (w/v) sodium azide and 2% sucrose.
Reconstitution & Storage	Add 50 ul of distilled water. Final anti-LBR antibody concentration is 1 mg/ml in PBS buffer with 2% sucrose. For longer periods of storage, store at 20°C. Avoid repeat freeze-thaw cycles.
Precautions	LBR antibody - middle region is for research use only and not for use in diagnostic or therapeutic procedures.

Protein Information

Name	LBR
Function	Catalyzes the reduction of the C14-unsaturated bond of lanosterol, as part of the metabolic pathway leading to cholesterol biosynthesis (PubMed: 12618959 , PubMed: 16784888 , PubMed: 21327084 , PubMed: 27336722 , PubMed: 9630650). Plays a critical role in myeloid cell cholesterol biosynthesis which is essential to both myeloid cell growth and functional maturation (By similarity). Mediates the activation of NADPH oxidases, perhaps by maintaining critical levels of cholesterol required for membrane lipid raft formation during neutrophil differentiation (By similarity). Anchors the lamina and the heterochromatin to the inner nuclear

membrane (PubMed:[10828963](#)).

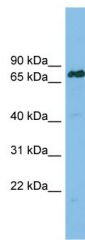
Cellular Location

Nucleus inner membrane; Multi-pass membrane protein. Endoplasmic reticulum membrane. Cytoplasm Nucleus. Note=Nucleus; nuclear rim

Tissue Location

Expressed in the bone marrow, liver, heart, adrenal gland, lung, placenta and uterus (PubMed:16784888). Expressed in osteoclasts and osteoblast-like cells (PubMed:21327084)

Images



WB Suggested Anti-LBR Antibody Titration: 0.2-1 µg/ml
ELISA Titer: 1:1562500
Positive Control: RPMI 8226 cell lysate
LBR is supported by BioGPS gene expression data to be expressed in RPMI 8226

Please note: All products are 'FOR RESEARCH USE ONLY. NOT FOR USE IN DIAGNOSTIC OR THERAPEUTIC PROCEDURES'.