

# MTX1 antibody - C-terminal region

Rabbit Polyclonal Antibody

Catalog # AI12563

## Product Information

---

<b>Application</b>	WB
<b>Primary Accession</b>	<a href="#">Q13505</a>
<b>Other Accession</b>	<a href="#">NM_002455</a> , <a href="#">NP_002446</a>
<b>Reactivity</b>	Human, Mouse, Rat, Rabbit, Zebrafish, Dog, Guinea Pig, Horse, Bovine
<b>Predicted</b>	Human, Mouse, Rat, Rabbit, Zebrafish, Pig, Dog, Guinea Pig, Horse, Bovine
<b>Host</b>	Rabbit
<b>Clonality</b>	Polyclonal
<b>Calculated MW</b>	51463

## Additional Information

---

<b>Gene ID</b>	4580
<b>Alias Symbol</b>	MTX, MTXN
<b>Other Names</b>	Metaxin-1, Mitochondrial outer membrane import complex protein 1, MTX1, MTX, MTXN
<b>Format</b>	Liquid. Purified antibody supplied in 1x PBS buffer with 0.09% (w/v) sodium azide and 2% sucrose.
<b>Reconstitution &amp; Storage</b>	Add 50 ul of distilled water. Final anti-MTX1 antibody concentration is 1 mg/ml in PBS buffer with 2% sucrose. For longer periods of storage, store at 20°C. Avoid repeat freeze-thaw cycles.
<b>Precautions</b>	MTX1 antibody - C-terminal region is for research use only and not for use in diagnostic or therapeutic procedures.

## Protein Information

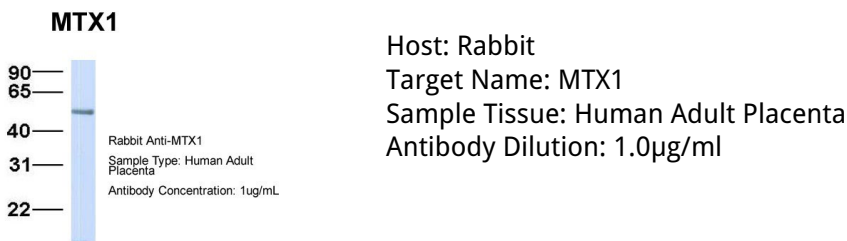
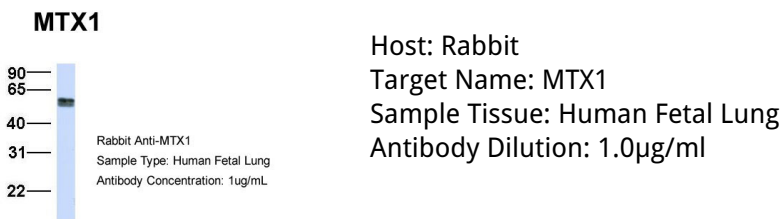
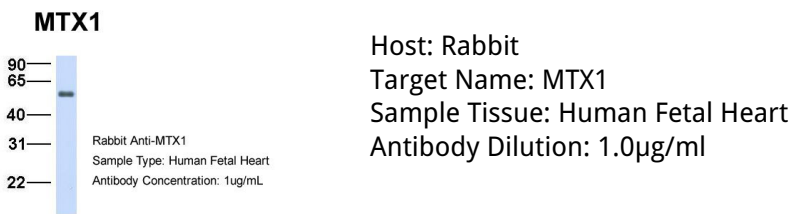
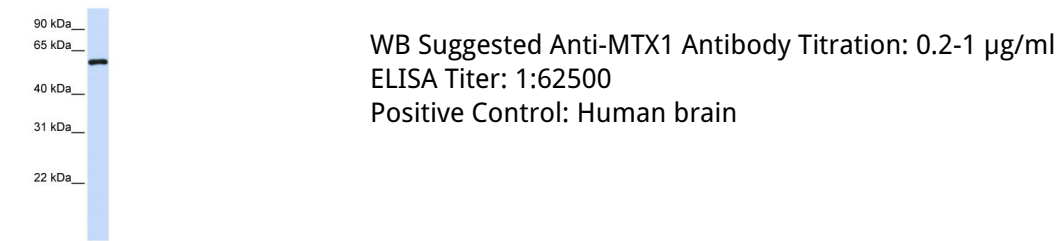
---

<b>Name</b>	MTX1
<b>Synonyms</b>	MTX, MTXN
<b>Function</b>	Involved in transport of proteins into the mitochondrion. Essential for embryonic development (By similarity).
<b>Cellular Location</b>	Membrane; Single-pass type I membrane protein. Mitochondrion outer membrane

# References

Xie,J.,(2007)FEBSLett.581(18),3545-3549ReconstitutionandStorage:Forshorttermuse,storeat2-8Cupto1week.F  
orlongtermstorage,storeat-20Cinsmallaliquotstopreventfreeze-thawcycles.

# Images



Please note: All products are 'FOR RESEARCH USE ONLY. NOT FOR USE IN DIAGNOSTIC OR THERAPEUTIC PROCEDURES'.