

PTPN2 antibody - N-terminal region

Rabbit Polyclonal Antibody

Catalog # AI12568

Product Information

Application	WB
Primary Accession	Q96AU5
Other Accession	NM_080423 , NP_536348
Reactivity	Human, Mouse, Rat, Rabbit, Zebrafish, Dog, Guinea Pig, Horse, Bovine, Yeast
Predicted	Human, Mouse, Rat, Rabbit, Zebrafish, Chicken, Guinea Pig, Horse, Bovine
Host	Rabbit
Clonality	Polyclonal
Calculated MW	39 KDa

Additional Information

Alias Symbol	PTPT, TC-PTP, TCELLPTP, TCPTP, PTN2
Format	Liquid. Purified antibody supplied in 1x PBS buffer with 0.09% (w/v) sodium azide and 2% sucrose.
Reconstitution & Storage	Add 100 ul of distilled water. Final anti-PTPN2 antibody concentration is 1 mg/ml in PBS buffer with 2% sucrose. For longer periods of storage, store at 20°C. Avoid repeat freeze-thaw cycles.
Precautions	PTPN2 antibody - N-terminal region is for research use only and not for use in diagnostic or therapeutic procedures.

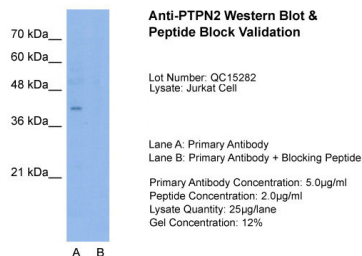
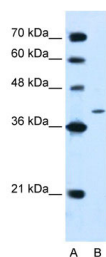
Protein Information

References

Shimizu, T., (2004) Exp. Hematol. 32(11), 1057-1063
Reconstitution and Storage: For short term use, store at 2-8°C up to 1 week. For long term storage, store at -20°C in small aliquots to prevent freeze-thaw cycles.

Images

WB Suggested Anti-PTPN2 Antibody Titration: 2.5µg/ml
Positive Control: Jurkat cell lysate
PTPN2 is strongly supported by BioGPS gene expression data to be expressed in Human Jurkat cells



Host: Rabbit
Target Name: PTPN2
Sample Tissue: Jurkat
Lane A: Primary Antibody
Lane B: Primary Antibody + Blocking Peptide
Primary Antibody
Concentration: 5.0 µg/ml
Peptide Concentration: 2.0 µg/ml
Lysate Quantity: 25 µg/lane
Gel Concentration: 12%

Please note: All products are 'FOR RESEARCH USE ONLY. NOT FOR USE IN DIAGNOSTIC OR THERAPEUTIC PROCEDURES'.