

# SSR2 antibody - N-terminal region

Rabbit Polyclonal Antibody

Catalog # AI12577

## Product Information

---

<b>Application</b>	WB, IHC
<b>Primary Accession</b>	<a href="#">P43308</a>
<b>Other Accession</b>	<a href="#">NM_003145</a> , <a href="#">NP_003136</a>
<b>Reactivity</b>	Human, Mouse, Rat, Zebrafish, Pig, Dog, Guinea Pig, Horse, Bovine
<b>Predicted</b>	Human, Rat, Zebrafish, Chicken, Guinea Pig, Horse, Bovine
<b>Host</b>	Rabbit
<b>Clonality</b>	Polyclonal
<b>Calculated MW</b>	20135

## Additional Information

---

<b>Gene ID</b>	6746
<b>Alias Symbol</b>	DKFZp686F19123, HSD25, TLAP, TRAPB, TRAP-BETA
<b>Other Names</b>	Translocon-associated protein subunit beta, TRAP-beta, Signal sequence receptor subunit beta, SSR-beta, SSR2, TRAPB
<b>Format</b>	Liquid. Purified antibody supplied in 1x PBS buffer with 0.09% (w/v) sodium azide and 2% sucrose.
<b>Reconstitution &amp; Storage</b>	Add 100 ul of distilled water. Final anti-SSR2 antibody concentration is 1 mg/ml in PBS buffer with 2% sucrose. For longer periods of storage, store at 20°C. Avoid repeat freeze-thaw cycles.
<b>Precautions</b>	SSR2 antibody - N-terminal region is for research use only and not for use in diagnostic or therapeutic procedures.

## Protein Information

---

<b>Name</b>	SSR2
<b>Synonyms</b>	TRAPB
<b>Function</b>	TRAP proteins are part of a complex whose function is to bind calcium to the ER membrane and thereby regulate the retention of ER resident proteins.
<b>Cellular Location</b>	Endoplasmic reticulum membrane; Single-pass type I membrane protein

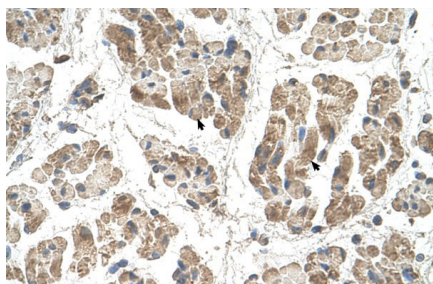
## References

---

Suzuki,Y.,Gene200(1-2),149-156(1997)ReconstitutionandStorage:Forshorttermuse,storeat2-8Cupto1week.Forlongtermstorage,storeat-20Cinsmallaliquotstopreventfreeze-thawcycles.

## Images

---



Human Muscle



WB Suggested Anti-SSR2 Antibody Titration: 1.25µg/ml  
Positive Control: Jurkat cell lysate

Please note: All products are 'FOR RESEARCH USE ONLY. NOT FOR USE IN DIAGNOSTIC OR THERAPEUTIC PROCEDURES'.