

TAPBP antibody - C-terminal region

Rabbit Polyclonal Antibody

Catalog # AI12578

Product Information

Application	WB, IHC
Primary Accession	O15533
Other Accession	NM_003190 , NP_003181
Reactivity	Human, Pig, Bovine, Sheep
Predicted	Human, Pig, Bovine, Sheep
Host	Rabbit
Clonality	Polyclonal
Calculated MW	47571

Additional Information

Gene ID	6892
Alias Symbol	NGS17, TAPA, TPN, TPSN
Other Names	Tapasin, TPN, TPSN, NGS-17, TAP-associated protein, TAP-binding protein, TAPBP, NGS17, TAPA
Format	Liquid. Purified antibody supplied in 1x PBS buffer with 0.09% (w/v) sodium azide and 2% sucrose.
Reconstitution & Storage	Add 50 ul of distilled water. Final anti-TAPBP antibody concentration is 1 mg/ml in PBS buffer with 2% sucrose. For longer periods of storage, store at 20°C. Avoid repeat freeze-thaw cycles.
Precautions	TAPBP antibody - C-terminal region is for research use only and not for use in diagnostic or therapeutic procedures.

Protein Information

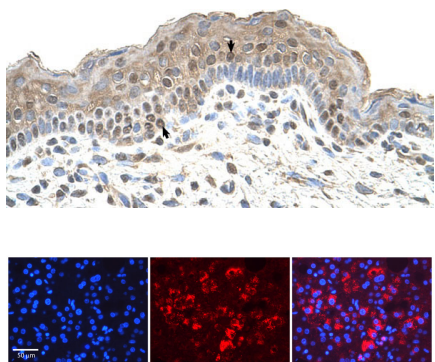
Name	TAPBP (HGNC:11566)
Synonyms	NGS17, TAPA
Function	Involved in the association of MHC class I with transporter associated with antigen processing (TAP) and in the assembly of MHC class I with peptide (peptide loading).
Cellular Location	Endoplasmic reticulum membrane; Single-pass type I membrane protein
Tissue Location	Neutrophils, mostly in fully differentiated cells.

References

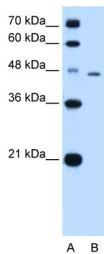
Facoetti,A.,(2005)Clin.CancerRes.11(23),8304-8311ReconstitutionandStorage:Forshorttermuse,storeat2-8Cup to1week.Forlongtermstorage,storeat-20Cinsmallaliquotstopreventfreeze-thawcycles.

Images

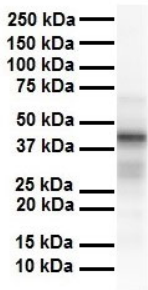
Human Skin



Rabbit Anti-TAPBP Antibody
Formalin Fixed Paraffin Embedded Tissue: Human Adult
liver Observed Staining: Cytoplasmic
Primary Antibody
Concentration: 1:600
Secondary Antibody: Donkey anti-Rabbit-Cy2/3
Secondary Antibody
Concentration: 1:200
Magnification: 20X
Exposure Time: 0.5 2.0 sec
Protocol located in Reviews and Data.



WB Suggested Anti-TAPBP Antibody Titration: 0.5µg/ml
Positive Control: HepG2 cell lysate



WB Suggested Anti-TAPBP antibody Titration: 1 µg/ml
Sample Type: Human liver

Please note: All products are 'FOR RESEARCH USE ONLY. NOT FOR USE IN DIAGNOSTIC OR THERAPEUTIC PROCEDURES'.