

# NR2E1 antibody - middle region

Rabbit Polyclonal Antibody

Catalog # AI12592

## Product Information

---

<b>Application</b>	WB
<b>Primary Accession</b>	<a href="#">Q64104</a>
<b>Other Accession</b>	<a href="#">NM_003269</a> , <a href="#">NP_003260</a>
<b>Reactivity</b>	Human, Mouse, Rat, Rabbit, Zebrafish, Pig, Dog, Guinea Pig, Horse, Bovine
<b>Predicted</b>	Human, Mouse, Rat, Rabbit, Zebrafish, Pig, Chicken, Dog, Horse
<b>Host</b>	Rabbit
<b>Clonality</b>	Polyclonal
<b>Calculated MW</b>	42619

## Additional Information

---

<b>Gene ID</b>	21907
<b>Alias Symbol</b>	TLL, TLX, XTLL
<b>Other Names</b>	Nuclear receptor subfamily 2 group E member 1, Nuclear receptor TLX, Protein tailless homolog, Tll, mTll, Nr2e1, Tll, Tlx
<b>Format</b>	Liquid. Purified antibody supplied in 1x PBS buffer with 0.09% (w/v) sodium azide and 2% sucrose.
<b>Reconstitution &amp; Storage</b>	Add 50 ul of distilled water. Final anti-NR2E1 antibody concentration is 1 mg/ml in PBS buffer with 2% sucrose. For longer periods of storage, store at 20°C. Avoid repeat freeze-thaw cycles.
<b>Precautions</b>	NR2E1 antibody - middle region is for research use only and not for use in diagnostic or therapeutic procedures.

## Protein Information

---

<b>Name</b>	Nr2e1
<b>Synonyms</b>	Tll, Tlx
<b>Function</b>	Orphan receptor that binds DNA as a monomer to hormone response elements (HRE) containing an extended core motif half-site sequence 5'-AAGGTCA-3' in which the 5' flanking nucleotides participate in determining receptor specificity (By similarity). Regulates cell cycle progression in neural stem cells of the developing brain. Involved in the regulation of retinal development and essential for vision. During retinogenesis, regulates PTEN-Cyclin D expression via binding to the promoter region of PTEN and suppressing its activity. May be involved in retinoic acid receptor (RAR)

regulation in retinal cells.

#### Cellular Location

Nucleus {ECO:0000255 | PROSITE-ProRule:PRU00407, ECO:0000269 | PubMed:17901127}

#### Tissue Location

Expressed in embryonic developing forebrain and in dorsal midbrain. Outside the neural epithelium only found in the surface ectoderm at the site of nasal placode formation, where subsequently the nasal and olfactory epithelium is formed. Also expressed in adult brain.

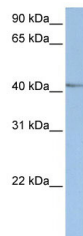
## References

---

Kumar, R.A., (er) Am. J. Med. Genet. B Neuropsychiatr. Genet. (2008) In press Reconstitution and Storage: For short term use, store at 2-8°C up to 1 week. For long term storage, store at -20°C in small aliquots to prevent freeze-thaw cycles.

## Images

---



WB Suggested Anti-NR2E1 Antibody Titration: 0.2-1 µg/ml  
ELISA Titer: 1:312500  
Positive Control: HepG2 cell lysate

Please note: All products are 'FOR RESEARCH USE ONLY. NOT FOR USE IN DIAGNOSTIC OR THERAPEUTIC PROCEDURES'.