

HAL antibody - C-terminal region

Rabbit Polyclonal Antibody

Catalog # AI12608

Product Information

Application	WB, IHC
Primary Accession	P42357
Other Accession	NM_002108 , NP_002099
Reactivity	Human, Mouse, Rat, Rabbit, Zebrafish, Pig, Dog, Guinea Pig, Horse, Bovine
Predicted	Human, Mouse, Rabbit, Zebrafish, Pig, Chicken, Dog
Host	Rabbit
Clonality	Polyclonal
Calculated MW	72698

Additional Information

Gene ID	3034
Alias Symbol	HIS, HSTD
Other Names	Histidine ammonia-lyase, Histidase, 4.3.1.3, HAL, HIS
Format	Liquid. Purified antibody supplied in 1x PBS buffer with 0.09% (w/v) sodium azide and 2% sucrose.
Reconstitution & Storage	Add 100 ul of distilled water. Final anti-HAL antibody concentration is 1 mg/ml in PBS buffer with 2% sucrose. For longer periods of storage, store at 20°C. Avoid repeat freeze-thaw cycles.
Precautions	HAL antibody - C-terminal region is for research use only and not for use in diagnostic or therapeutic procedures.

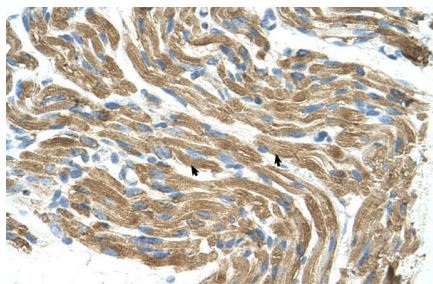
Protein Information

Name	HAL
Synonyms	HIS

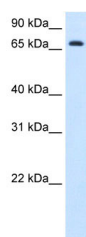
References

Aleman, G., Am. J. Physiol. Endocrinol. Metab. 289(1), E172-E179 (2005) Reconstitution and Storage: For short term use, store at 2-8°C up to 1 week. For long term storage, store at -20°C in small aliquots to prevent freeze-thaw cycles. Publications: Hu, Z. et al. Quantitative liver-specific protein fingerprint in blood: a signature for hepatotoxicity. Theranostics 4, 215-28 (2014). WB, Mouse, Human, Rat, Bovine, Dog, Pig, Horse, Rabbit, Guinea pig, Zebrafish 24465277

Images



Human Muscle



WB Suggested Anti-HAL Antibody Titration: 1.25 µg/ml
Positive Control: Fetal liver cell lysate

Please note: All products are 'FOR RESEARCH USE ONLY. NOT FOR USE IN DIAGNOSTIC OR THERAPEUTIC PROCEDURES'.