

ALDH4A1 antibody - C-terminal region

Rabbit Polyclonal Antibody

Catalog # AI12609

Product Information

Application	WB, IHC
Primary Accession	P30038
Other Accession	NM_003748 , NP_003739
Reactivity	Human, Mouse, Rat, Rabbit, Zebrafish, Pig, Dog, Horse, Bovine
Predicted	Human, Mouse, Rat, Rabbit, Zebrafish, Chicken, Horse
Host	Rabbit
Clonality	Polyclonal
Calculated MW	61719

Additional Information

Gene ID	8659
Alias Symbol	ALDH4, P5CD, P5CDh, P5CDhL, P5CDhS
Other Names	Delta-1-pyrroline-5-carboxylate dehydrogenase, mitochondrial, P5C dehydrogenase, 1.2.1.88, Aldehyde dehydrogenase family 4 member A1, L-glutamate gamma-semialdehyde dehydrogenase, ALDH4A1, ALDH4, P5CDH
Format	Liquid. Purified antibody supplied in 1x PBS buffer with 0.09% (w/v) sodium azide and 2% sucrose.
Reconstitution & Storage	Add 100 ul of distilled water. Final anti-ALDH4A1 antibody concentration is 1 mg/ml in PBS buffer with 2% sucrose. For longer periods of storage, store at 20°C. Avoid repeat freeze-thaw cycles.
Precautions	ALDH4A1 antibody - C-terminal region is for research use only and not for use in diagnostic or therapeutic procedures.

Protein Information

Name	ALDH4A1
Synonyms	ALDH4, P5CDH
Function	Irreversible conversion of delta-1-pyrroline-5-carboxylate (P5C), derived either from proline or ornithine, to glutamate. This is a necessary step in the pathway interconnecting the urea and tricarboxylic acid cycles. The preferred substrate is glutamic gamma- semialdehyde, other substrates include succinic, glutaric and adipic semialdehydes.
Cellular Location	Mitochondrion matrix.

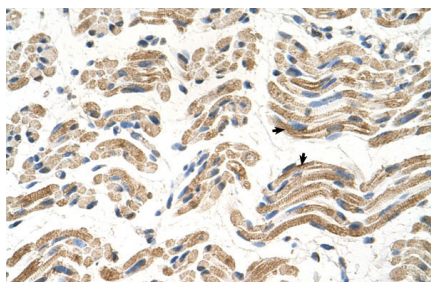
Tissue Location

Highest expression is found in liver followed by skeletal muscle, kidney, heart, brain, placenta, lung and pancreas

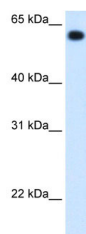
References

Yoon, K.A., (2004) J. Hum. Genet. 49(3), 134-140
Reconstitution and Storage: For short term use, store at 2-8°C up to 1 week. For long term storage, store at -20°C in small aliquots to prevent freeze-thaw cycles.

Images



Human Muscle



WB Suggested Anti-ALDH4A1 Antibody Titration: 1.25 μ g/ml
Positive Control: Fetal liver cell lysate

Please note: All products are 'FOR RESEARCH USE ONLY. NOT FOR USE IN DIAGNOSTIC OR THERAPEUTIC PROCEDURES'.