

GLUD1 antibody - N-terminal region

Rabbit Polyclonal Antibody

Catalog # AI12610

Product Information

Application	WB, IHC
Primary Accession	Q5TDP6
Other Accession	NM_005271 , NP_005262
Reactivity	Human, Mouse, Rat, Rabbit, Zebrafish, Pig, Dog, Guinea Pig, Horse, Bovine, Sheep
Predicted Host	Human, Zebrafish, Pig, Chicken
Clonality	Rabbit
Calculated MW	Polyclonal 57278

Additional Information

Gene ID	51557
Alias Symbol	GDH, GDH1, GLUD, MGC132003
Other Names	Lengsin, Glutamate-ammonia ligase domain-containing protein 1, Lens glutamine synthase-like, LGSN, GLULD1, LGS
Format	Liquid. Purified antibody supplied in 1x PBS buffer with 0.09% (w/v) sodium azide and 2% sucrose.
Reconstitution & Storage	Add 50 ul of distilled water. Final anti-GLUD1 antibody concentration is 1 mg/ml in PBS buffer with 2% sucrose. For longer periods of storage, store at 20°C. Avoid repeat freeze-thaw cycles.
Precautions	GLUD1 antibody - N-terminal region is for research use only and not for use in diagnostic or therapeutic procedures.

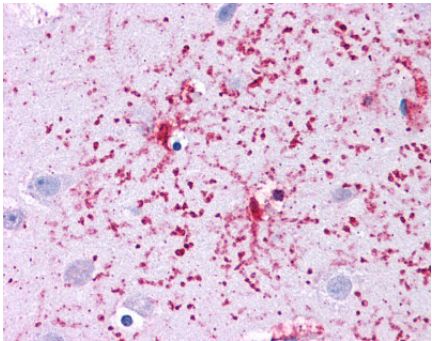
Protein Information

Name	LGSN
Synonyms	GLULD1, LGS
Function	May act as a component of the cytoskeleton or as a chaperone for the reorganization of intermediate filament proteins during terminal differentiation in the lens. Does not seem to have enzymatic activity (By similarity).
Tissue Location	Abundantly expressed in lens.

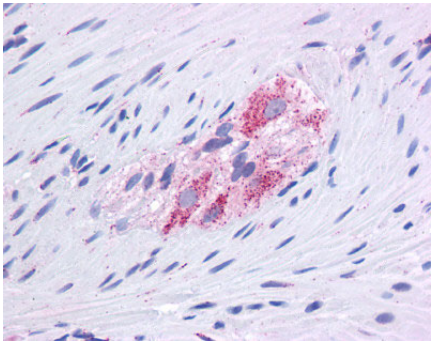
References

Kawajiri,M.,(2006)Pediatr.Res.59(3),359-364ReconstitutionandStorage:Forshorttermuse,storeat2-8Cupto1week.Forlongtermstorage,storeat-20Cin small aliquotstopreventfreeze-thawcycles.

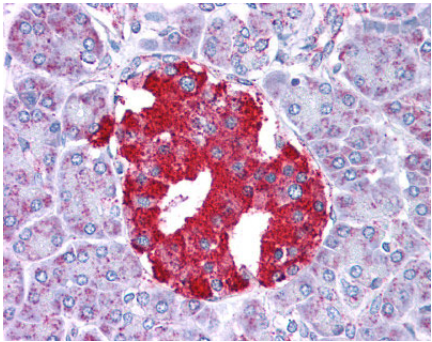
Images



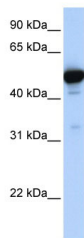
Immunohistochemistry with pFa fixed human brain tissue tissue



Immunohistochemistry with CORTEX/KIDNEY tissue

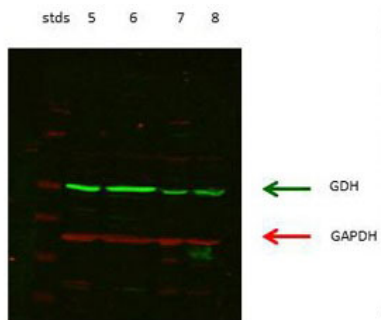


Immunohistochemistry with pFA fixed human pancreas tissue tissue

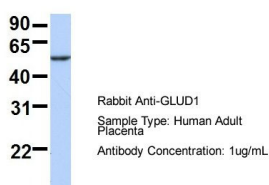


GLUD1 antibody - N-terminal region validated by WB using Fetal Liver Lysate at 1µg/ml.

lanes 5: rat kidney cordex lanes 6: rat kidney proximal tubules prepped from cortex lanes 7: LLC PK-F+ pig kidney proximal tubule tissue culture lysate lanes 8: rat brain supernatant

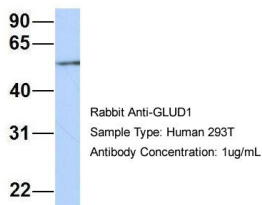


GLUD1



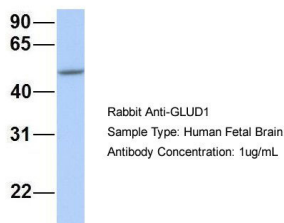
Host: Rabbit Target Name: SERPINA3 Sample Tissue: Human Adult Placenta Antibody Dilution: 1.0ug/ml

GLUD1



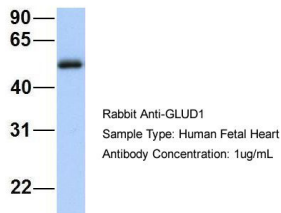
Host: Rabbit Target Name: HIRIP3 Sample Tissue: 293T Antibody Dilution: 1.0µg/ml GLUD1 is supported by BioGPS gene expression data to be expressed in HEK293T

GLUD1

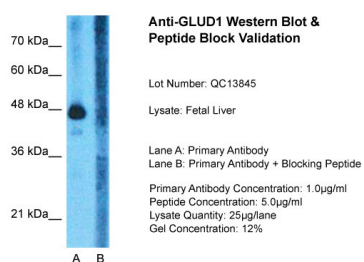


Host: Rabbit Target Name: NOP56 Sample Tissue: Human Fetal Brain Antibody Dilution: 1.0ug/ml

GLUD1



Host: Rabbit Target Name: GNAS Sample Tissue: Human Fetal Heart Antibody Dilution: 1.0ug/ml



Host: Rabbit Target Name: GLUD1 Sample Tissue: Human Fetal Liver Lane A: Primary Antibody Lane B: Primary Antibody + Blocking Peptide Primary Antibody Concentration: 1ug/ml Peptide Concentration: 5ug/ml Lysate Quantity: 25ug/lane/lane Gel Concentration: 0.12

Please note: All products are 'FOR RESEARCH USE ONLY. NOT FOR USE IN DIAGNOSTIC OR THERAPEUTIC PROCEDURES'.