

SBDS antibody - N-terminal region

Rabbit Polyclonal Antibody

Catalog # AI12611

Product Information

Application	WB, IHC
Primary Accession	Q9Y3A5
Other Accession	NM_016038 , NP_057122
Reactivity	Human, Mouse, Rat, Rabbit, Zebrafish, Pig, Dog, Guinea Pig, Horse, Bovine
Predicted	Human, Mouse, Rat, Zebrafish, Pig, Chicken, Dog, Bovine
Host	Rabbit
Clonality	Polyclonal
Calculated MW	28764

Additional Information

Gene ID	51119
Alias Symbol	CGI-97, FLJ10917, SDS, SWDS
Other Names	Ribosome maturation protein SBDS, Shwachman-Bodian-Diamond syndrome protein, SBDS
Format	Liquid. Purified antibody supplied in 1x PBS buffer with 0.09% (w/v) sodium azide and 2% sucrose.
Reconstitution & Storage	Add 100 ul of distilled water. Final anti-SBDS antibody concentration is 1 mg/ml in PBS buffer with 2% sucrose. For longer periods of storage, store at 20°C. Avoid repeat freeze-thaw cycles.
Precautions	SBDS antibody - N-terminal region is for research use only and not for use in diagnostic or therapeutic procedures.

Protein Information

Name	SBDS
Function	Required for the assembly of mature ribosomes and ribosome biogenesis. Together with EFL1, triggers the GTP-dependent release of EIF6 from 60S pre-ribosomes in the cytoplasm, thereby activating ribosomes for translation competence by allowing 80S ribosome assembly and facilitating EIF6 recycling to the nucleus, where it is required for 60S rRNA processing and nuclear export. Required for normal levels of protein synthesis. May play a role in cellular stress resistance. May play a role in cellular response to DNA damage. May play a role in cell proliferation.
Cellular Location	Cytoplasm. Nucleus, nucleolus. Nucleus, nucleoplasm. Cytoplasm,

cytoskeleton, spindle. Note=Primarily detected in the cytoplasm, and at low levels in nucleus and nucleolus (PubMed:17475909, PubMed:19602484). Detected in the nucleolus during G1 and G2 phase of the cell cycle, and diffusely distributed in the nucleus during S phase. Detected at the mitotic spindle. Colocalizes with the microtubule organizing center during interphase (PubMed:19759903).

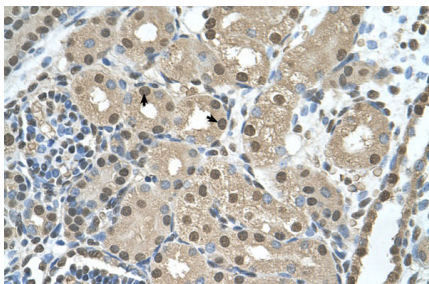
Tissue Location

Widely expressed.

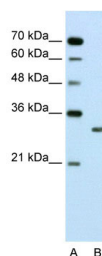
References

Austin, K.M., (2005) Blood 106(4), 1253-1258 Reconstitution and Storage: For short term use, store at 2-8°C up to 1 week. For long term storage, store at -20°C in small aliquots to prevent freeze-thaw cycles. Publications: Sezgin, G. et al. Impaired growth, hematopoietic colony formation, and ribosome maturation in human cells depleted of Shwachman-Diamond syndrome protein SBDS. *Pediatr. Blood Cancer* 60, 281-6 (2013). WB, Dog, Pig, Mouse, Horse, Human, Guinea pig, Bovine, Rat, Rabbit, Zebrafish 22997148

Images



Human kidney



WB Suggested Anti-SBDS Antibody Titration: 2.5 µg/ml
Positive Control: Jurkat cell lysate

Please note: All products are 'FOR RESEARCH USE ONLY. NOT FOR USE IN DIAGNOSTIC OR THERAPEUTIC PROCEDURES'.