

SGPP2 antibody - C-terminal region

Rabbit Polyclonal Antibody

Catalog # AI12614

Product Information

Application	WB, IHC
Primary Accession	Q8IWX5
Other Accession	XP_001128702
Reactivity	Human
Predicted	Human, Mouse, Rat, Rabbit, Pig, Bovine, Guinea Pig, Horse
Host	Rabbit
Clonality	Polyclonal
Calculated MW	44741

Additional Information

Gene ID	130367
Alias Symbol	FLJ39004, SPP2
Other Names	Sphingosine-1-phosphate phosphatase 2, SPPase2, Spp2, hSPP2, 3.1.3.-, Sphingosine-1-phosphatase 2, SGPP2
Format	Liquid. Purified antibody supplied in 1x PBS buffer with 0.09% (w/v) sodium azide and 2% sucrose.
Reconstitution & Storage	Add 100 ul of distilled water. Final anti-SGPP2 antibody concentration is 1 mg/ml in PBS buffer with 2% sucrose. For longer periods of storage, store at 20°C. Avoid repeat freeze-thaw cycles.
Precautions	SGPP2 antibody - C-terminal region is for research use only and not for use in diagnostic or therapeutic procedures.

Protein Information

Name	SGPP2 (HGNC:19953)
Function	Has specific phosphohydrolase activity towards sphingoid base 1-phosphates. Has high phosphohydrolase activity against dihydrosphingosine-1-phosphate and sphingosine-1-phosphate (S1P) in vitro (PubMed: 12411432). Sphingosine-1-phosphate phosphatase activity is needed for efficient recycling of sphingosine into the sphingolipid synthesis pathway (By similarity). May play a role in attenuating intracellular sphingosine 1-phosphate (S1P) signaling. May play a role in pro-inflammatory signaling (PubMed: 17113265). Plays a role in the regulation of pancreatic islet beta-cell endoplasmic reticulum stress and proliferation (By similarity).

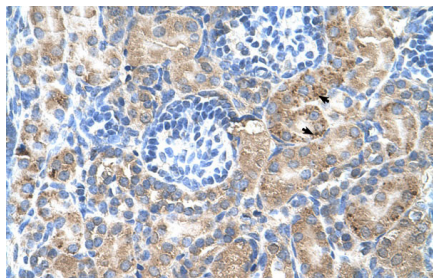
Cellular Location

Endoplasmic reticulum membrane; Multi-pass membrane protein

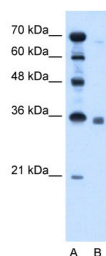
Tissue Location

Expressed strongly in kidney and heart, followed by brain, colon, small intestine and lung. Not detected in skeletal muscle, thymus, spleen, liver, placenta, and peripheral blood leukocytes.

Images



Human kidney



WB Suggested Anti-SGPP2 Antibody Titration: 2.5µg/ml
Positive Control: HepG2 cell lysate

Please note: All products are 'FOR RESEARCH USE ONLY. NOT FOR USE IN DIAGNOSTIC OR THERAPEUTIC PROCEDURES'.