

ACSM2A Antibody - middle region

Rabbit Polyclonal Antibody
Catalog # AI12615

Product Information

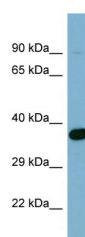
Application	WB
Primary Accession	F5H4B8
Reactivity	Human, Mouse, Rat, Rabbit, Dog, Guinea Pig, Bovine
Predicted	Human, Mouse, Rat, Rabbit, Pig, Dog, Guinea Pig, Bovine
Host	Rabbit
Clonality	Polyclonal
Calculated MW	38 KDa

Additional Information

Format	Liquid. Purified antibody supplied in 1x PBS buffer with 0.09% (w/v) sodium azide and 2% sucrose.
Reconstitution & Storage	Add 50 μ l of distilled water. Final Anti-ACSM2A antibody concentration is 1 mg/ml in PBS buffer with 2% sucrose. For longer periods of storage, store at -20°C. Avoid repeat freeze-thaw cycles.
Precautions	ACSM2A Antibody - middle region is for research use only and not for use in diagnostic or therapeutic procedures.

Protein Information

Images



Host: Rabbit
Target Name: ACSM2A
Sample Tissue: NCI-H226 Whole cell lysate
S
Antibody Dilution: 1.0 μ g/ml

Please note: All products are 'FOR RESEARCH USE ONLY. NOT FOR USE IN DIAGNOSTIC OR THERAPEUTIC PROCEDURES'.