

DGKH antibody - middle region

Rabbit Polyclonal Antibody

Catalog # AI12617

Product Information

Application	WB
Primary Accession	Q86XP1
Other Accession	NM_178009 , NP_821077
Reactivity	Human, Dog, Horse
Predicted	Human, Dog, Horse
Host	Rabbit
Clonality	Polyclonal
Calculated MW	134866

Additional Information

Gene ID	160851
Alias Symbol	DGKeta, DKFZp761I1510
Other Names	Diacylglycerol kinase eta, DAG kinase eta, 2.7.1.107, Diglyceride kinase eta, DGK-eta, DGKH
Format	Liquid. Purified antibody supplied in 1x PBS buffer with 0.09% (w/v) sodium azide and 2% sucrose.
Reconstitution & Storage	Add 50 ul of distilled water. Final anti-DGKH antibody concentration is 1 mg/ml in PBS buffer with 2% sucrose. For longer periods of storage, store at 20°C. Avoid repeat freeze-thaw cycles.
Precautions	DGKH antibody - middle region is for research use only and not for use in diagnostic or therapeutic procedures.

Protein Information

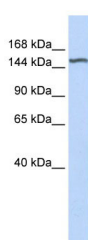
Name	DGKH (HGNC:2854)
Function	Diacylglycerol kinase that converts diacylglycerol/DAG into phosphatidic acid/phosphatidate/PA and regulates the respective levels of these two bioactive lipids (PubMed: 12810723 , PubMed: 23949095). Thereby, acts as a central switch between the signaling pathways activated by these second messengers with different cellular targets and opposite effects in numerous biological processes (Probable) (PubMed: 12810723 , PubMed: 23949095). Plays a key role in promoting cell growth (PubMed: 19710016). Activates the Ras/B-Raf/C-Raf/MEK/ERK signaling pathway induced by EGF (PubMed: 19710016). Regulates the recruitment of RAF1 and BRAF from cytoplasm to membranes and their heterodimerization (PubMed: 19710016).

Cellular Location	Cytoplasm. Cell membrane Note=Translocated from the cytoplasm to endosomes in response to stress stimuli (PubMed:12810723). Isoform 2 is rapidly relocated back to the cytoplasm upon removal of stress stimuli, whereas isoform 1 exhibits sustained endosomal association (PubMed:12810723). Translocates from the cytoplasm to the cell membrane in the presence of active GTP-bound form of HRAS (PubMed:19710016)
Tissue Location	[Isoform 1]: Expressed only in testis, kidney and colon.

References

Baum,A.E.,(2008)Mol.Psychiatry13(2),197-207ReconstitutionandStorage:Forshorttermuse,storeat2-8Cupto1week.Forlongtermstorage,storeat-20Cinsmallaliquotstopreventfreeze-thawcycles.

Images



WB Suggested Anti-DGKH Antibody Titration: 0.2-1 µg/ml
 ELISA Titer: 1:12500
 Positive Control: Human Liver

Please note: All products are 'FOR RESEARCH USE ONLY. NOT FOR USE IN DIAGNOSTIC OR THERAPEUTIC PROCEDURES'.