

# PDE9A Antibody

Rabbit Polyclonal Antibody

Catalog # AI12618

## Product Information

---

<b>Application</b>	WB, IHC
<b>Primary Accession</b>	<a href="#">O76083-13</a>
<b>Other Accession</b>	<a href="#">NM_001001581</a> , <a href="#">NP_001001581</a>
<b>Reactivity</b>	Human, Mouse, Rat, Rabbit, Zebrafish, Dog, Guinea Pig, Horse, Bovine
<b>Predicted</b>	Human, Mouse, Rat, Rabbit, Pig, Dog, Guinea Pig, Horse, Bovine
<b>Host</b>	Rabbit
<b>Clonality</b>	Polyclonal
<b>Calculated MW</b>	61 KDa

## Additional Information

---

<b>Alias Symbol</b>	HSPDE9A2
<b>Format</b>	Liquid. Purified antibody supplied in 1x PBS buffer with 0.09% (w/v) sodium azide and 2% sucrose.
<b>Reconstitution &amp; Storage</b>	Add 50 ul of distilled water. Final anti-PDE9A antibody concentration is 1 mg/ml in PBS buffer with 2% sucrose. For longer periods of storage, store at 20°C. Avoid repeat freeze-thaw cycles.
<b>Precautions</b>	PDE9A Antibody is for research use only and not for use in diagnostic or therapeutic procedures.

## Protein Information

---

## References

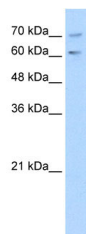
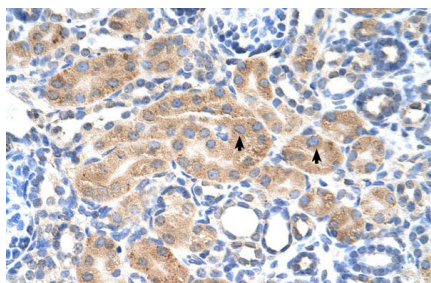
---

Huai, Q., (2004) Proc. Natl. Acad. Sci. U.S.A. 101(26), 9624-9629 Reconstitution and Storage: For short term use, store at 2-8°C up to 1 week. For long term storage, store at -20°C in small aliquots to prevent freeze-thaw cycles.

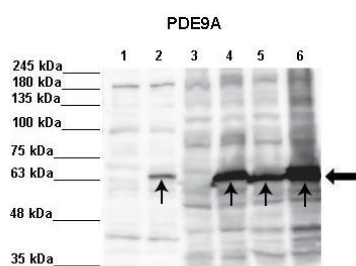
## Images

---

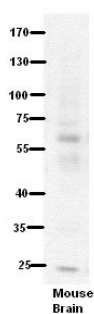
Human kidney



WB Suggested Anti-PDE9A Antibody Titration: 1.0 µg/ml  
Positive Control: Jurkat cell lysate



Sample Type : Lane 1: 5ug in vitro translation without DNA Lane 2: 5ug in vitro translation hNeur1-pcDNA3 Lane 3: 60ug in vitro translation rNeur1-pcDNA3 Lane 4: 60ug HEK293 cell lysate (not transfected) Lane 5: 60ug hNeur1-pcDNA3 overexpressed in HEK293 cells Lane 6: 60ug rNeur1-pcDNA3 overexpressed in HEK293 cells  
Primary Antibody Dilution : 1:1000  
Secondary Antibody: Anti-rabbit-HRP  
Secondary Antibody Dilution: 1:5000 Color/Signal  
Descriptions: PDE9A Gene Name: Kati Taal and Richard Tamme, Department of Gene Technology, Tallinn University of Technology.  
Submitted by:



WB Suggested Anti-PDE9A Antibody Titration: 5% Milk  
ELISA Titer: dilution: 1:500  
Positive Control: Mouse Brain lysate

Please note: All products are 'FOR RESEARCH USE ONLY. NOT FOR USE IN DIAGNOSTIC OR THERAPEUTIC PROCEDURES'.