

TRAPPC10 Antibody - C-terminal region

Rabbit Polyclonal Antibody

Catalog # AI12619

Product Information

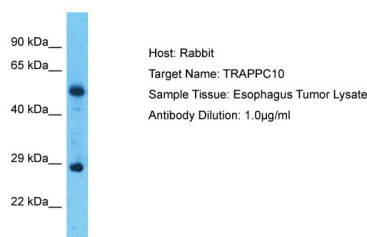
| | |
|--------------------------|---|
| Application | WB |
| Primary Accession | Q86SI7 |
| Reactivity | Human, Mouse, Rat, Zebrafish, Dog, Guinea Pig, Horse, Bovine |
| Predicted | Human, Mouse, Rat, Zebrafish, Pig, Dog, Guinea Pig, Horse, Bovine |
| Host | Rabbit |
| Clonality | Polyclonal |
| Calculated MW | 30 kDa |

Additional Information

| | |
|-------------------------------------|--|
| Alias Symbol | TRAPPC10, |
| Format | Liquid. Purified antibody supplied in 1x PBS buffer with 0.09% (w/v) sodium azide and 2% sucrose. |
| Reconstitution & Storage | Add 50 μ l of distilled water. Final Anti-TRAPPC10 antibody concentration is 1 mg/ml in PBS buffer with 2% sucrose. For longer periods of storage, store at -20°C. Avoid repeat freeze-thaw cycles. |
| Precautions | TRAPPC10 Antibody - C-terminal region is for research use only and not for use in diagnostic or therapeutic procedures. |

Protein Information

Images



Host: Rabbit
Target Name: TRAPPC10
Sample Tissue: Esophagus Tumor lysates
Antibody Dilution: 1.0µg/ml

Please note: All products are 'FOR RESEARCH USE ONLY. NOT FOR USE IN DIAGNOSTIC OR THERAPEUTIC PROCEDURES'.