

PFKL antibody - middle region

Rabbit Polyclonal Antibody

Catalog # AI12622

Product Information

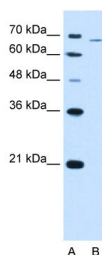
Application	WB
Primary Accession	Q7L2M7
Other Accession	NM_002626 , AAH18295
Reactivity	Human, Mouse, Rat, Rabbit, Zebrafish, Dog, Guinea Pig, Horse, Bovine, Sheep
Predicted	Human, Mouse, Rat, Chicken, Dog, Guinea Pig
Host	Rabbit
Clonality	Polyclonal
Calculated MW	64 kDa

Additional Information

Alias Symbol	DKFZp686G1648, DKFZp686L2097, FLJ30173, FLJ40909, PFK-B
Format	Liquid. Purified antibody supplied in 1x PBS buffer with 0.09% (w/v) sodium azide and 2% sucrose.
Reconstitution & Storage	Add 100 ul of distilled water. Final anti-PFKL antibody concentration is 1 mg/ml in PBS buffer with 2% sucrose. For longer periods of storage, store at 20°C. Avoid repeat freeze-thaw cycles.
Precautions	PFKL antibody - middle region is for research use only and not for use in diagnostic or therapeutic procedures.

Protein Information

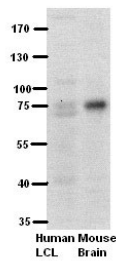
Images



WB Suggested Anti-PFKL Antibody Titration: 2.5µg/ml
Positive Control: HepG2 cell lysate
PFKL is supported by BioGPS gene expression data to be expressed in HepG2

WB Suggested Anti-PFKL Antibody Titration: 5% Milk
ELISA Titer: dilution: 1:500

Positive Control: human LCL and mouse brains



Please note: All products are 'FOR RESEARCH USE ONLY. NOT FOR USE IN DIAGNOSTIC OR THERAPEUTIC PROCEDURES'.