

C21orf62 antibody - middle region

Rabbit Polyclonal Antibody

Catalog # AI12629

Product Information

Application	WB
Primary Accession	Q9NYP8
Other Accession	NM_019596 , NP_062542
Reactivity	Human, Rat
Predicted	Human
Host	Rabbit
Clonality	Polyclonal
Calculated MW	24852

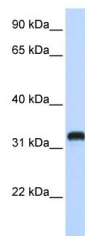
Additional Information

Gene ID	56245
Alias Symbol	B37, C21orf120, PRED81
Other Names	Uncharacterized protein C21orf62, B37, C21orf62, C21orf120
Format	Liquid. Purified antibody supplied in 1x PBS buffer with 0.09% (w/v) sodium azide and 2% sucrose.
Reconstitution & Storage	Add 50 ul of distilled water. Final anti-C21orf62 antibody concentration is 1 mg/ml in PBS buffer with 2% sucrose. For longer periods of storage, store at 20°C. Avoid repeat freeze-thaw cycles.
Precautions	C21orf62 antibody - middle region is for research use only and not for use in diagnostic or therapeutic procedures.

Protein Information

Name	EPCIP (HGNC:1305)
Function	Likely to be involved with PKD1 in the detection, sequestration and exocytosis of senescent mitochondria.
Cellular Location	Vesicle. Secreted, extracellular exosome. Note=Detected on migrasomes and on extracellular exosomes in blood and urine
Tissue Location	Detected in the kidney and in the endothelium of large blood vessels (at protein level).

Images



WB Suggested Anti-C21orf62 Antibody Titration: 0.2-1
µg/ml
ELISA Titer: 1:1562500
Positive Control: 293T cell lysate

Please note: All products are 'FOR RESEARCH USE ONLY. NOT FOR USE IN DIAGNOSTIC OR THERAPEUTIC PROCEDURES'.