

C21orf58 antibody - N-terminal region

Rabbit Polyclonal Antibody

Catalog # AI12631

Product Information

Application	WB
Primary Accession	P58505
Other Accession	NM_058180 , NP_478060
Reactivity	Human
Predicted	Human
Host	Rabbit
Clonality	Polyclonal
Calculated MW	35003

Additional Information

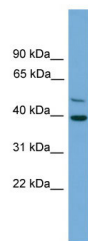
Gene ID	54058
Other Names	Uncharacterized protein C21orf58, C21orf58
Format	Liquid. Purified antibody supplied in 1x PBS buffer with 0.09% (w/v) sodium azide and 2% sucrose.
Reconstitution & Storage	Add 50 ul of distilled water. Final anti-C21orf58 antibody concentration is 1 mg/ml in PBS buffer with 2% sucrose. For longer periods of storage, store at 20°C. Avoid repeat freeze-thaw cycles.
Precautions	C21orf58 antibody - N-terminal region is for research use only and not for use in diagnostic or therapeutic procedures.

Protein Information

Name	C21orf58
Tissue Location	Expressed in skin and fetal lung.

Images

WB Suggested Anti-C21orf58 Antibody Titration: 0.2-1
µg/ml
Positive Control: Jurkat cell lysate



Please note: All products are 'FOR RESEARCH USE ONLY. NOT FOR USE IN DIAGNOSTIC OR THERAPEUTIC PROCEDURES'.