

NCF4 antibody - middle region

Rabbit Polyclonal Antibody

Catalog # AI12639

Product Information

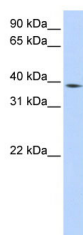
Application	WB
Primary Accession	A8K4F9
Other Accession	NM_013416 , NP_038202
Reactivity	Human, Mouse, Rat, Rabbit, Dog, Guinea Pig, Horse, Bovine
Predicted	Human, Mouse, Rat, Rabbit, Pig, Dog, Guinea Pig, Horse, Bovine
Host	Rabbit
Clonality	Polyclonal
Calculated MW	39 kDa

Additional Information

Alias Symbol	MGC3810, NCF, P40PHOX, SH3PXD4
Format	Liquid. Purified antibody supplied in 1x PBS buffer with 0.09% (w/v) sodium azide and 2% sucrose.
Reconstitution & Storage	Add 50 ul of distilled water. Final anti-NCF4 antibody concentration is 1 mg/ml in PBS buffer with 2% sucrose. For longer periods of storage, store at 20°C. Avoid repeat freeze-thaw cycles.
Precautions	NCF4 antibody - middle region is for research use only and not for use in diagnostic or therapeutic procedures.

Protein Information

Images



WB Suggested Anti-NCF4 Antibody Titration: 0.2-1 µg/ml
ELISA Titer: 1:312500
Positive Control: HepG2 cell lysate