

PARVB antibody - N-terminal region

Rabbit Polyclonal Antibody

Catalog # AI12641

Product Information

Application	WB
Primary Accession	Q96PN1
Other Accession	NM_001003828 , NP_001003828
Reactivity	Human, Mouse, Rat, Zebrafish, Dog, Guinea Pig, Horse, Bovine
Predicted	Human, Mouse, Rat, Zebrafish, Chicken, Dog, Guinea Pig, Horse, Bovine
Host	Rabbit
Clonality	Polyclonal
Calculated MW	45 KDa

Additional Information

Alias Symbol	CGI-56
Format	Liquid. Purified antibody supplied in 1x PBS buffer with 0.09% (w/v) sodium azide and 2% sucrose.
Reconstitution & Storage	Add 50 ul of distilled water. Final anti-PARVB antibody concentration is 1 mg/ml in PBS buffer with 2% sucrose. For longer periods of storage, store at 20°C. Avoid repeat freeze-thaw cycles.
Precautions	PARVB antibody - N-terminal region is for research use only and not for use in diagnostic or therapeutic procedures.

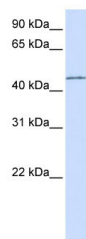
Protein Information

References

Johnstone, C.N., (2008) Mol. Cell. Biol. 28(2), 687-704
Reconstitution and Storage: For short term use, store at 2-8°C up to 1 week. For long term storage, store at -20°C in small aliquots to prevent freeze-thaw cycles.

Images

WB Suggested Anti-PARVB Antibody Titration: 0.2-1 µg/ml
ELISA Titer: 1:312500
Positive Control: Transfected 293T



Please note: All products are 'FOR RESEARCH USE ONLY. NOT FOR USE IN DIAGNOSTIC OR THERAPEUTIC PROCEDURES'.