

KIAA0101 antibody - N-terminal region

Rabbit Polyclonal Antibody

Catalog # AI12644

Product Information

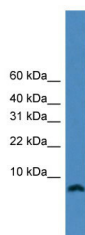
Application	WB
Primary Accession	A6NNU5
Other Accession	NM_001029989 , NP_001025160
Reactivity	Human, Mouse, Rat, Rabbit, Pig, Dog, Guinea Pig, Horse, Bovine
Predicted	Human, Dog, Horse
Host	Rabbit
Clonality	Polyclonal
Calculated MW	7 KDa

Additional Information

Alias Symbol	L5, NS5ATP9, OEATC-1, OEATC1, PAF, p15(PAF), OEATC, p15PAF, p15/PAF
Format	Liquid. Purified antibody supplied in 1x PBS buffer with 0.09% (w/v) sodium azide and 2% sucrose.
Reconstitution & Storage	Add 50 ul of distilled water. Final anti-KIAA0101 antibody concentration is 1 mg/ml in PBS buffer with 2% sucrose. For longer periods of storage, store at 20°C. Avoid repeat freeze-thaw cycles.
Precautions	KIAA0101 antibody - N-terminal region is for research use only and not for use in diagnostic or therapeutic procedures.

Protein Information

Images



WB Suggested Anti-KIAA0101 Antibody Titration: 0.2-1 µg/ml
ELISA Titer: 1:312500
Positive Control: HepG2 cell lysate
KIAA0101 is strongly supported by BioGPS gene expression data to be expressed in Human HepG2 cells