

MTHFD2 antibody - N-terminal region

Rabbit Polyclonal Antibody

Catalog # AI12646

Product Information

Application	WB
Primary Accession	P13995
Other Accession	NM_006636 , NP_006627
Reactivity	Human, Mouse, Rat, Rabbit, Zebrafish, Pig, Dog, Guinea Pig, Horse, Bovine, Yeast
Predicted Host	Human, Mouse, Rat, Zebrafish, Pig, Chicken, Dog, Guinea Pig, Horse
Clonality	Rabbit
Calculated MW	Polyclonal 37895

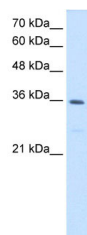
Additional Information

Gene ID	10797
Alias Symbol Other Names	NMDMC Bifunctional methylenetetrahydrofolate dehydrogenase/cyclohydrolase, mitochondrial, NAD-dependent methylenetetrahydrofolate dehydrogenase, 1.5.1.15, Methenyltetrahydrofolate cyclohydrolase, 3.5.4.9, MTHFD2, NMDMC
Format	Liquid. Purified antibody supplied in 1x PBS buffer with 0.09% (w/v) sodium azide and 2% sucrose.
Reconstitution & Storage	Add 100 ul of distilled water. Final anti-MTHFD2 antibody concentration is 1 mg/ml in PBS buffer with 2% sucrose. For longer periods of storage, store at 20°C. Avoid repeat freeze-thaw cycles.
Precautions	MTHFD2 antibody - N-terminal region is for research use only and not for use in diagnostic or therapeutic procedures.

Protein Information

Name	MTHFD2
Synonyms	NMDMC
Function	Although its dehydrogenase activity is NAD-specific, it can also utilize NADP at a reduced efficiency.
Cellular Location	Mitochondrion.

Images



WB Suggested Anti-MTHFD2 Antibody Titration: 1.25µg/ml
Positive Control: HepG2 cell lysate

Please note: All products are 'FOR RESEARCH USE ONLY. NOT FOR USE IN DIAGNOSTIC OR THERAPEUTIC PROCEDURES'.