

PAGE1 antibody - middle region

Rabbit Polyclonal Antibody

Catalog # AI12654

Product Information

Application	WB
Primary Accession	O75459
Other Accession	NM_003785 , NP_003776
Reactivity	Human
Predicted	Human
Host	Rabbit
Clonality	Polyclonal
Calculated MW	16150

Additional Information

Gene ID	8712
Alias Symbol	GAGE-9, GAGEB1, PAGE-1, AL5, CT16.3
Other Names	P antigen family member 1, PAGE-1, AL5, G antigen 9, GAGE-9, G antigen family B member 1, Prostate-associated gene 1 protein, PAGE1, GAGE9, GAGEB1
Format	Liquid. Purified antibody supplied in 1x PBS buffer with 0.09% (w/v) sodium azide and 2% sucrose.
Reconstitution & Storage	Add 100 ul of distilled water. Final anti-PAGE1 antibody concentration is 1 mg/ml in PBS buffer with 2% sucrose. For longer periods of storage, store at 20°C. Avoid repeat freeze-thaw cycles.
Precautions	PAGE1 antibody - middle region is for research use only and not for use in diagnostic or therapeutic procedures.

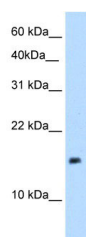
Protein Information

Name	PAGE1
Synonyms	GAGE9, GAGEB1
Tissue Location	Isolated from prostate cancer cell lines; expression associated with progression to androgen insensitive phenotype. Expressed in normal testis and at lower level in normal placenta

References

De(1999)CancerRes.59(13),3157-3165ReconstitutionandStorage:Forshorttermuse,storeat2-8Cupto1week.Forlongtermstorage,storeat-20Cinsmallaliquotstopreventfreeze-thawcycles.

Images



WB Suggested Anti-PAGE1 Antibody Titration: 5.0µg/ml
Positive Control: 721_B cell lysate
PAGE1 is supported by BioGPS gene expression data to be expressed in 721_B

Please note: All products are 'FOR RESEARCH USE ONLY. NOT FOR USE IN DIAGNOSTIC OR THERAPEUTIC PROCEDURES'.