

Nup37 antibody - N-terminal region

Rabbit Polyclonal Antibody

Catalog # AI12670

Product Information

Application	WB
Primary Accession	Q9CWU9
Other Accession	NM_027191 , NP_081467
Reactivity	Human, Mouse, Rat, Rabbit, Dog, Guinea Pig, Horse, Bovine
Predicted	Human, Mouse, Rat, Pig, Chicken, Dog, Horse, Bovine
Host	Rabbit
Clonality	Polyclonal
Calculated MW	36732

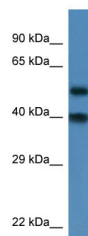
Additional Information

Gene ID	69736
Alias Symbol	2410003L22Rik, 2810039M17Rik
Other Names	Nucleoporin Nup37, Nup107-160 subcomplex subunit Nup37, Nup37
Format	Liquid. Purified antibody supplied in 1x PBS buffer with 0.09% (w/v) sodium azide and 2% sucrose.
Reconstitution & Storage	Add 50 ul of distilled water. Final anti-Nup37 antibody concentration is 1 mg/ml in PBS buffer with 2% sucrose. For longer periods of storage, store at 20°C. Avoid repeat freeze-thaw cycles.
Precautions	Nup37 antibody - N-terminal region is for research use only and not for use in diagnostic or therapeutic procedures.

Protein Information

Name	Nup37
Function	Component of the Nup107-160 subcomplex of the nuclear pore complex (NPC). The Nup107-160 subcomplex is required for the assembly of a functional NPC. The Nup107-160 subcomplex is also required for normal kinetochore microtubule attachment, mitotic progression and chromosome segregation (By similarity).
Cellular Location	Chromosome, centromere, kinetochore. Nucleus, nuclear pore complex

Images



WB Suggested Anti-Nup37 Antibody Titration: 1.0 µg/ml
Positive Control: Mouse Heart

Please note: All products are 'FOR RESEARCH USE ONLY. NOT FOR USE IN DIAGNOSTIC OR THERAPEUTIC PROCEDURES'.