

ADAM15 antibody - middle region

Rabbit Polyclonal Antibody
Catalog # AI12672

Product Information

Application	WB, IHC
Primary Accession	Q71S69
Other Accession	NM_207196 , NP_997079
Reactivity	Human, Mouse, Rat, Rabbit, Pig, Dog, Guinea Pig, Horse, Bovine
Predicted	Human, Mouse, Rat, Rabbit, Pig, Dog, Guinea Pig, Horse, Bovine
Host	Rabbit
Clonality	Polyclonal
Calculated MW	70 KDa

Additional Information

Alias Symbol	MDC15
Format	Liquid. Purified antibody supplied in 1x PBS buffer with 0.09% (w/v) sodium azide and 2% sucrose.
Reconstitution & Storage	Add 50 ul of distilled water. Final anti-ADAM15 antibody concentration is 1 mg/ml in PBS buffer with 2% sucrose. For longer periods of storage, store at 20°C. Avoid repeat freeze-thaw cycles.
Precautions	ADAM15 antibody - middle region is for research use only and not for use in diagnostic or therapeutic procedures.

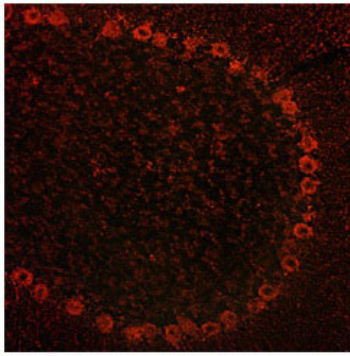
Protein Information

References

Zhong, J.L., (2008) Mol. Cancer Res. 6(3), 383-394
Reconstitution and Storage: For short term use, store at 2-8°C up to 1 week. For long term storage, store at -20°C in small aliquots to prevent freeze-thaw cycles.

Images

rat and mouse brain



WB Suggested Anti-ADAM15 Antibody Titration: 0.2-1
 $\mu\text{g/ml}$
ELISA Titer: 1:62500
Positive Control: Human brain

Please note: All products are 'FOR RESEARCH USE ONLY. NOT FOR USE IN DIAGNOSTIC OR THERAPEUTIC PROCEDURES'.