

ADAM9 antibody - middle region

Rabbit Polyclonal Antibody

Catalog # AI12673

Product Information

Application	WB
Primary Accession	B7ZLN7
Other Accession	NM_001005845 , NP_001005845
Reactivity	Human, Mouse, Rat, Rabbit, Zebrafish, Pig, Dog, Guinea Pig, Horse, Bovine
Predicted	Human, Mouse, Rat, Zebrafish, Dog, Guinea Pig, Horse, Bovine
Host	Rabbit
Clonality	Polyclonal
Calculated MW	69 KDa

Additional Information

Alias Symbol	KIAA0021, MCMP, MDC9, Mltng, CORD9
Format	Liquid. Purified antibody supplied in 1x PBS buffer with 0.09% (w/v) sodium azide and 2% sucrose.
Reconstitution & Storage	Add 50 ul of distilled water. Final anti-ADAM9 antibody concentration is 1 mg/ml in PBS buffer with 2% sucrose. For longer periods of storage, store at 20°C. Avoid repeat freeze-thaw cycles.
Precautions	ADAM9 antibody - middle region is for research use only and not for use in diagnostic or therapeutic procedures.

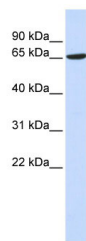
Protein Information

References

Zigrino, P., (2007) J. Biol. Chem. 282(42), 30785-30793
Reconstitution and Storage: For short term use, store at 2-8°C up to 1 week. For long term storage, store at -20°C in small aliquots to prevent freeze-thaw cycles.

Images

WB Suggested Anti-ADAM9 Antibody Titration: 0.2-1 µg/ml
ELISA Titer: 1:312500
Positive Control: 293T cell lysate



Please note: All products are 'FOR RESEARCH USE ONLY. NOT FOR USE IN DIAGNOSTIC OR THERAPEUTIC PROCEDURES'.