

OSMR antibody - middle region

Rabbit Polyclonal Antibody

Catalog # AI12677

Product Information

Application	WB
Primary Accession	Q99650
Other Accession	NM_003999 , NP_003990
Reactivity	Human, Rabbit, Dog, Guinea Pig, Horse
Predicted	Human, Rabbit, Dog, Guinea Pig, Horse
Host	Rabbit
Clonality	Polyclonal
Calculated MW	110509

Additional Information

Gene ID	9180
Alias Symbol Other Names	MGC150626, MGC150627, MGC75127, OSMRB, PLCA1 Oncostatin-M-specific receptor subunit beta, Interleukin-31 receptor subunit beta, IL-31 receptor subunit beta, IL-31R subunit beta, IL-31R-beta, IL-31RB, OSMR, OSMRB
Format	Liquid. Purified antibody supplied in 1x PBS buffer with 0.09% (w/v) sodium azide and 2% sucrose.
Reconstitution & Storage	Add 50 ul of distilled water. Final anti-OSMR antibody concentration is 1 mg/ml in PBS buffer with 2% sucrose. For longer periods of storage, store at 20°C. Avoid repeat freeze-thaw cycles.
Precautions	OSMR antibody - middle region is for research use only and not for use in diagnostic or therapeutic procedures.

Protein Information

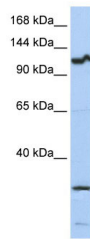
Name	OSMR
Synonyms	OSMRB
Function	Associates with IL31RA to form the IL31 receptor. Binds IL31 to activate STAT3 and possibly STAT1 and STAT5. Capable of transducing OSM-specific signaling events.
Cellular Location	Membrane; Single-pass type I membrane protein
Tissue Location	Expressed in keratinocytes (at protein level) (PubMed:21261663). Expressed at

relatively high levels in all neural cells as well as fibroblast and epithelial cells
(PubMed:8999038)

References

Arita,K.,(2008)Am.J.Hum.Genet.82(1),73-80ReconstitutionandStorage:Forshorttermuse,storeat2-8Cupto1week.Forlongtermstorage,storeat-20Cinsmallaliquotstopreventfreeze-thawcycles.

Images



WB Suggested Anti-OSMR Antibody Titration: 0.2-1 µg/ml
ELISA Titer: 1:312500
Positive Control: 721_B cell lysate

Please note: All products are 'FOR RESEARCH USE ONLY. NOT FOR USE IN DIAGNOSTIC OR THERAPEUTIC PROCEDURES'.