

GOLGB1 antibody - N-terminal region

Rabbit Polyclonal Antibody

Catalog # AI12685

Product Information

Application	WB, IHC
Primary Accession	Q14789
Other Accession	NM_004487 , NP_004478
Reactivity	Human, Mouse, Rat, Rabbit, Pig, Dog, Horse, Bovine
Predicted	Human, Mouse, Rat, Rabbit, Pig, Dog, Horse, Bovine
Host	Rabbit
Clonality	Polyclonal
Calculated MW	376019

Additional Information

Gene ID	2804
Alias Symbol	GCP, GCP372, GIANTIN, GOLIM1
Other Names	Golgin subfamily B member 1, 372 kDa Golgi complex-associated protein, GCP372, Giantin, Macrogolgin, GOLGB1
Format	Liquid. Purified antibody supplied in 1x PBS buffer with 0.09% (w/v) sodium azide and 2% sucrose.
Reconstitution & Storage	Add 50 ul of distilled water. Final anti-GOLGB1 antibody concentration is 1 mg/ml in PBS buffer with 2% sucrose. For longer periods of storage, store at 20°C. Avoid repeat freeze-thaw cycles.
Precautions	GOLGB1 antibody - N-terminal region is for research use only and not for use in diagnostic or therapeutic procedures.

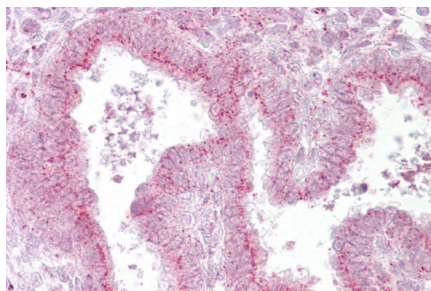
Protein Information

Name	GOLGB1
Function	May participate in forming intercisternal cross-bridges of the Golgi complex.
Cellular Location	Golgi apparatus membrane; Single-pass type I membrane protein

References

Rosing, M., (2007) Exp. Cell Res. 313(11), 2318-2325
Reconstitution and Storage: For short term use, store at 2-8°C up to 1 week. For long term storage, store at -20°C in small aliquots to prevent freeze-thaw cycles.

Images



Uterus



WB Suggested Anti-GOLGB1 Antibody Titration: 0.2-1
µg/ml

ELISA Titer: 1:12500

Positive Control: 721_B cell lysate

GOLGB1 is supported by BioGPS gene expression data to
be expressed in 721_B

Please note: All products are 'FOR RESEARCH USE ONLY. NOT FOR USE IN DIAGNOSTIC OR THERAPEUTIC PROCEDURES'.