

IL11RA antibody - middle region

Rabbit Polyclonal Antibody

Catalog # AI12686

Product Information

| | |
|--------------------------|---|
| Application | WB |
| Primary Accession | Q14626 |
| Other Accession | NM_004512 , NP_004503 |
| Reactivity | Human, Mouse, Rat, Rabbit, Dog, Guinea Pig, Horse, Bovine |
| Predicted | Human, Mouse, Rabbit, Dog, Guinea Pig, Horse, Bovine |
| Host | Rabbit |
| Clonality | Polyclonal |
| Calculated MW | 45222 |

Additional Information

| | |
|-------------------------------------|---|
| Gene ID | 3590 |
| Alias Symbol | MGC2146, CRSDA |
| Other Names | Interleukin-11 receptor subunit alpha, IL-11 receptor subunit alpha, IL-11R subunit alpha, IL-11R-alpha, IL-11RA, IL11RA |
| Format | Liquid. Purified antibody supplied in 1x PBS buffer with 0.09% (w/v) sodium azide and 2% sucrose. |
| Reconstitution & Storage | Add 50 ul of distilled water. Final anti-IL11RA antibody concentration is 1 mg/ml in PBS buffer with 2% sucrose. For longer periods of storage, store at 20°C. Avoid repeat freeze-thaw cycles. |
| Precautions | IL11RA antibody - middle region is for research use only and not for use in diagnostic or therapeutic procedures. |

Protein Information

| | |
|--------------------------|---|
| Name | IL11RA (HGNC:5967) |
| Function | Receptor for interleukin-11 (IL11). The receptor systems for IL6, LIF, OSM, CNTF, IL11 and CT1 can utilize IL6ST for initiating signal transmission. The IL11/IL11RA/IL6ST complex may be involved in the control of proliferation and/or differentiation of skeletogenic progenitor or other mesenchymal cells (Probable). Essential for the normal development of craniofacial bones and teeth. Restricts suture fusion and tooth number. |
| Cellular Location | [Interleukin-11 receptor subunit alpha]: Membrane; Single-pass type I membrane protein [Isoform HCR2]: Secreted |

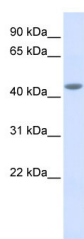
Tissue Location

Expressed in a number of cell lines, including the myelogenous leukemia cell line K-562, the megakaryocytic leukemia cell line M-07e, the erythroleukemia cell line TF-1, and the osteosarcoma cell lines, MG-63 and SaOS-2 (PubMed:7670098). Also expressed in normal and malignant prostate epithelial cell lines. Expression levels are increased in prostate carcinoma.

References

Nakayama, T., (2007) Int. J. Oncol. 30(4), 825-833 Reconstitution and Storage: For short term use, store at 2-8°C up to 1 week. For long term storage, store at -20°C in small aliquots to prevent freeze-thaw cycles.

Images



WB Suggested Anti-IL11RA Antibody Titration: 0.2-1 µg/ml
ELISA Titer: 1:12500
Positive Control: Human Muscle

Please note: All products are 'FOR RESEARCH USE ONLY. NOT FOR USE IN DIAGNOSTIC OR THERAPEUTIC PROCEDURES'.