

Dhrs3 antibody - middle region

Rabbit Polyclonal Antibody

Catalog # AI12689

Product Information

Application	WB
Primary Accession	O88876
Other Accession	NM_011303 , NP_035433
Reactivity	Human, Mouse, Rat, Rabbit, Zebrafish, Pig, Dog, Guinea Pig, Horse, Bovine
Predicted	Human, Mouse, Rat, Rabbit, Zebrafish, Pig, Chicken, Dog, Guinea Pig, Bovine
Host	Rabbit
Clonality	Polyclonal
Calculated MW	33652

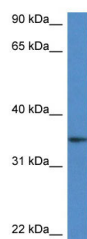
Additional Information

Gene ID	20148
Alias Symbol	Rsdr1, retSDR1
Other Names	Short-chain dehydrogenase/reductase 3, 1.1.1.300, Retinal short-chain dehydrogenase/reductase 1, retSDR1, Dhhrs3, Rsdr1
Format	Liquid. Purified antibody supplied in 1x PBS buffer with 0.09% (w/v) sodium azide and 2% sucrose.
Reconstitution & Storage	Add 50 ul of distilled water. Final anti-Dhrs3 antibody concentration is 1 mg/ml in PBS buffer with 2% sucrose. For longer periods of storage, store at 20°C. Avoid repeat freeze-thaw cycles.
Precautions	Dhrs3 antibody - middle region is for research use only and not for use in diagnostic or therapeutic procedures.

Protein Information

Name	Dhrs3
Synonyms	Rsdr1
Function	Catalyzes the reduction of all-trans-retinal to all-trans- retinol in the presence of NADPH.
Cellular Location	Membrane; Multi-pass membrane protein
Tissue Location	In the embryo, expressed in developing osteogenic and chondrogenic tissues of vertebra, rib, tooth and limb bud

Images



WB Suggested Anti-Dhrs3 Antibody Titration: 1.0 µg/ml
Positive Control: Mouse Spleen

Please note: All products are 'FOR RESEARCH USE ONLY. NOT FOR USE IN DIAGNOSTIC OR THERAPEUTIC PROCEDURES'.