

B4galt6 antibody - C-terminal region

Rabbit Polyclonal Antibody
Catalog # AI12690

Product Information

Application	WB
Primary Accession	Q9WVK5
Other Accession	NM_019737 , NP_062711
Reactivity	Human, Mouse, Rat, Rabbit, Zebrafish, Pig, Dog, Guinea Pig, Horse, Bovine
Predicted	Human, Mouse, Rabbit, Zebrafish, Chicken, Dog, Horse
Host	Rabbit
Clonality	Polyclonal
Calculated MW	44759

Additional Information

Gene ID	56386
Alias Symbol	AA536803, AU022389
Other Names	Beta-1, 4-galactosyltransferase 6, Beta-1, 4-GalTase 6, Beta4Gal-T6, b4Gal-T6, 2.4.1.-, UDP-Gal:beta-GlcNAc beta-1, 4-galactosyltransferase 6, UDP-galactose:beta-N-acetylglucosamine beta-1, 4-galactosyltransferase 6, Glucosylceramide beta-1, 4-galactosyltransferase, 2.4.1.274, Lactosylceramide synthase, LacCer synthase, UDP-Gal:glucosylceramide beta-1, 4-galactosyltransferase, B4galt6
Format	Liquid. Purified antibody supplied in 1x PBS buffer with 0.09% (w/v) sodium azide and 2% sucrose.
Reconstitution & Storage	Add 50 ul of distilled water. Final anti-B4galt6 antibody concentration is 1 mg/ml in PBS buffer with 2% sucrose. For longer periods of storage, store at 20°C. Avoid repeat freeze-thaw cycles.
Precautions	B4galt6 antibody - C-terminal region is for research use only and not for use in diagnostic or therapeutic procedures.

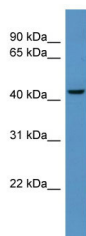
Protein Information

Name	B4galt6 {ECO:0000312 MGI:MGI:1928380}
Function	Catalyzes the synthesis of lactosylceramide (LacCer) via the transfer of galactose from UDP-galactose to glucosylceramide (GlcCer) (PubMed: 23882130 , PubMed: 30114188). LacCer is the starting point in the biosynthesis of all gangliosides (membrane-bound glycosphingolipids) which play pivotal roles in the CNS including neuronal maturation and axonal and myelin formation (PubMed: 30114188).

Cellular Location Golgi apparatus, Golgi stack membrane {ECO:0000250|UniProtKB:P15291}; Single-pass type II membrane protein Note=Trans cisternae of Golgi stack. {ECO:0000250|UniProtKB:P15291}

Tissue Location Brain and kidney..

Images



WB Suggested Anti-B4galt6 Antibody Titration: 0.2-1
 $\mu\text{g/ml}$
ELISA Titer: 1:62500
Positive Control: Mouse Liver

Please note: All products are 'FOR RESEARCH USE ONLY. NOT FOR USE IN DIAGNOSTIC OR THERAPEUTIC PROCEDURES'.