

Ndufb8 antibody - C-terminal region

Rabbit Polyclonal Antibody

Catalog # AI12692

Product Information

Application	WB
Primary Accession	Q9D6J5
Other Accession	NM_026061 , NP_080337
Reactivity	Human, Mouse, Rat, Rabbit, Zebrafish, Goat, Dog, Guinea Pig, Horse, Bovine, Sheep
Predicted Host	Human, Rat, Zebrafish, Pig, Chicken, Goat, Dog, Bovine, Sheep
Clonality	Rabbit
Calculated MW	Polyclonal 21876

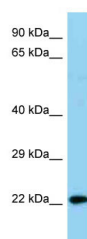
Additional Information

Gene ID	67264
Alias Symbol	2900010I05Rik, AI987932
Other Names	NADH dehydrogenase [ubiquinone] 1 beta subcomplex subunit 8, mitochondrial, Complex I-ASHI, CI-ASHI, NADH-ubiquinone oxidoreductase ASHI subunit, Ndufb8
Format	Liquid. Purified antibody supplied in 1x PBS buffer with 0.09% (w/v) sodium azide and 2% sucrose.
Reconstitution & Storage	Add 50 ul of distilled water. Final anti-Ndufb8 antibody concentration is 1 mg/ml in PBS buffer with 2% sucrose. For longer periods of storage, store at 20°C. Avoid repeat freeze-thaw cycles.
Precautions	Ndufb8 antibody - C-terminal region is for research use only and not for use in diagnostic or therapeutic procedures.

Protein Information

Name	Ndufb8
Function	Accessory subunit of the mitochondrial membrane respiratory chain NADH dehydrogenase (Complex I), that is believed not to be involved in catalysis. Complex I functions in the transfer of electrons from NADH to the respiratory chain. The immediate electron acceptor for the enzyme is believed to be ubiquinone.
Cellular Location	Mitochondrion inner membrane; Single-pass membrane protein; Matrix side

Images



WB Suggested Anti-Ndufb8 Antibody Titration: 1.0 µg/ml
Positive Control: Mouse Heart

Please note: All products are 'FOR RESEARCH USE ONLY. NOT FOR USE IN DIAGNOSTIC OR THERAPEUTIC PROCEDURES'.