

DLL1 antibody - N-terminal region

Rabbit Polyclonal Antibody

Catalog # AI12699

Product Information

Application	WB, IHC
Primary Accession	O00548
Other Accession	NM_005618 , NP_005609
Reactivity	Human, Mouse, Rat, Rabbit, Pig, Bovine
Predicted	Human, Mouse, Rat, Rabbit, Chicken, Bovine
Host	Rabbit
Clonality	Polyclonal
Calculated MW	78056

Additional Information

Gene ID	28514
Alias Symbol	DELTA1, Delta, DL1
Other Names	Delta-like protein 1, Drosophila Delta homolog 1, Delta1, H-Delta-1, DLL1
Format	Liquid. Purified antibody supplied in 1x PBS buffer with 0.09% (w/v) sodium azide and 2% sucrose.
Reconstitution & Storage	Add 50 ul of distilled water. Final anti-DLL1 antibody concentration is 1 mg/ml in PBS buffer with 2% sucrose. For longer periods of storage, store at 20°C. Avoid repeat freeze-thaw cycles.
Precautions	DLL1 antibody - N-terminal region is for research use only and not for use in diagnostic or therapeutic procedures.

Protein Information

Name	DLL1 (HGNC:2908)
Function	Transmembrane ligand protein of NOTCH1, NOTCH2 and NOTCH3 receptors that binds the extracellular domain (ECD) of Notch receptor in a cis and trans fashion manner (PubMed: 11006133). Following transinteraction, ligand cells produce mechanical force that depends of a clathrin-mediated endocytosis, requiring ligand ubiquitination, EPN1 interaction, and actin polymerisation; these events promote Notch receptor extracellular domain (NECD) transendocytosis and triggers Notch signaling through induction of cleavage, hyperphosphorylation, and nuclear accumulation of the intracellular domain of Notch receptors (NICD) (By similarity). Is required for embryonic development and maintenance of adult stem cells in many different tissues and immune systems; the DLL1-induced Notch signaling is mediated through

an intercellular communication that regulates cell lineage, cell specification, cell patterning and morphogenesis through effects on differentiation and proliferation (PubMed:[11581320](#)). Plays a role in brain development at different level, namely by regulating neuronal differentiation of neural precursor cells via cell-cell interaction, most likely through the lateral inhibitory system in an endogenous level dependent-manner. During neocortex development, Dll1-Notch signaling transmission is mediated by dynamic interactions between intermediate neurogenic progenitors and radial glia; the cell-cell interactions are mediated via dynamic and transient elongation processes, likely to reactivate/maintain Notch activity in neighboring progenitors, and coordinate progenitor cell division and differentiation across radial and zonal boundaries. During cerebellar development, regulates Bergmann glial monolayer formation and its morphological maturation through a Notch signaling pathway. At the retina and spinal cord level, regulates neurogenesis by preventing the premature differentiation of neural progenitors and also by maintaining progenitors in spinal cord through Notch signaling pathway. Also controls neurogenesis of the neural tube in a progenitor domain- specific fashion along the dorsoventral axis. Maintains quiescence of neural stem cells and plays a role as a fate determinant that segregates asymmetrically to one daughter cell during neural stem cells mitosis, resulting in neuronal differentiation in Dll1-inheriting cell. Plays a role in immune system development, namely the development of all T-cells and marginal zone (MZ) B-cells (By similarity). Blocks the differentiation of progenitor cells into the B-cell lineage while promoting the emergence of a population of cells with the characteristics of a T-cell/NK-cell precursor (PubMed:[11581320](#)). Also plays a role during muscle development. During early development, inhibits myoblasts differentiation from the medial dermomyotomal lip and later regulates progenitor cell differentiation. Directly modulates cell adhesion and basal lamina formation in satellite cells through Notch signaling. Maintains myogenic progenitors pool by suppressing differentiation through down-regulation of MYOD1 and is required for satellite cell homing and PAX7 expression. During craniofacial and trunk myogenesis suppresses differentiation of cranial mesoderm-derived and somite-derived muscle via MYOD1 regulation but in cranial mesoderm- derived progenitors, is neither required for satellite cell homing nor for PAX7 expression. Also plays a role during pancreatic cell development. During type B pancreatic cell development, may be involved in the initiation of proximodistal patterning in the early pancreatic epithelium. Stimulates multipotent pancreatic progenitor cells proliferation and pancreatic growth by maintaining HES1 expression and PTF1A protein levels. During fetal stages of development, is required to maintain arterial identity and the responsiveness of arterial endothelial cells for VEGFA through regulation of KDR activation and NRP1 expression. Controls sprouting angiogenesis and subsequent vertical branch formation through regulation on tip cell differentiation. Negatively regulates goblet cell differentiation in intestine and controls secretory fat commitment through lateral inhibition in small intestine. Plays a role during inner ear development; negatively regulates auditory hair cell differentiation. Plays a role during nephron development through Notch signaling pathway. Regulates growth, blood pressure and energy homeostasis (By similarity).

Cellular Location

Apical cell membrane {ECO:0000250|UniProtKB:Q61483}; Single-pass type I membrane protein {ECO:0000250|UniProtKB:Q61483}. Cell junction, adherens junction {ECO:0000250|UniProtKB:Q61483}. Membrane raft {ECO:0000250|UniProtKB:Q61483}. Note=Distributed around adherens junction in the apical endfeet through interactions with MAGI1 {ECO:0000250|UniProtKB:Q61483}

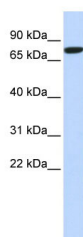
Tissue Location

Expressed in heart and pancreas, with lower expression in brain and muscle and almost no expression in placenta, lung, liver and kidney

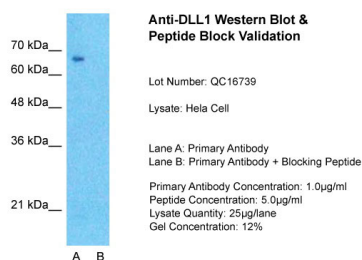
References

Dezso, K., (2008) Virchows Arch. 452(4), 443-448 Reconstitution and Storage: For short term use, store at 2-8°C up to 1 week. For long term storage, store at -20°C in small aliquots to prevent freeze-thaw cycles. Publications: Suprynowicz, F.A. et al. Conditionally reprogrammed cells represent a stem-like state of adult epithelial cells. Proc. Natl. Acad. Sci. U.S.A. 109, 20035-40 (2012). WB, IHC, Human, Bovine, Rat, Pig, Mouse, Rabbit 23169653 Caliceti, C. et al. 17 β -estradiol enhances signaling mediated by VEGF-A-delta-like ligand 4-notch1 axis in human endothelial cells. PLoS One 8, e71440 (2013). WB, IHC, Human, Bovine, Rat, Pig, Mouse, Rabbit 23967210

Images



WB Suggested Anti-DLL1 Antibody Titration: 0.2-1 μ g/ml
ELISA Titer: 1:1562500
Positive Control: Hela cell lysate



Host: Rabbit
Target Name: DLL1
Sample Tissue: Hela
Lane A: Primary Antibody
Lane B: Primary Antibody + Blocking Peptide
Primary Antibody
Concentration: 1 μ g/ml
Peptide Concentration: 5 μ g/ml
Lysate Quantity: 25 μ g/lane/lane Gel
Concentration: 0.12

Please note: All products are 'FOR RESEARCH USE ONLY. NOT FOR USE IN DIAGNOSTIC OR THERAPEUTIC PROCEDURES'.