

PGRMC1 antibody - N-terminal region

Rabbit Polyclonal Antibody

Catalog # AI12710

Product Information

Application	WB, IHC
Primary Accession	O00264
Other Accession	NM_006667 , NP_006658
Reactivity	Human, Mouse, Rat, Rabbit, Pig, Dog, Horse, Bovine
Predicted	Human, Mouse, Rat, Rabbit, Dog, Horse, Bovine
Host	Rabbit
Clonality	Polyclonal
Calculated MW	21671

Additional Information

Gene ID	10857
Alias Symbol	HPR6.6, MPR
Other Names	Membrane-associated progesterone receptor component 1, mPR, PGRMC1, HPR6.6, PGRMC
Format	Liquid. Purified antibody supplied in 1x PBS buffer with 0.09% (w/v) sodium azide and 2% sucrose.
Reconstitution & Storage	Add 50 ul of distilled water. Final anti-PGRMC1 antibody concentration is 1 mg/ml in PBS buffer with 2% sucrose. For longer periods of storage, store at 20°C. Avoid repeat freeze-thaw cycles.
Precautions	PGRMC1 antibody - N-terminal region is for research use only and not for use in diagnostic or therapeutic procedures.

Protein Information

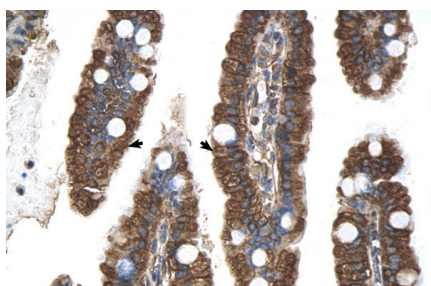
Name	PGRMC1 (HGNC:16090)
Function	Component of a progesterone-binding protein complex (PubMed: 28396637). Binds progesterone (PubMed: 25675345). Has many reported cellular functions (heme homeostasis, interaction with CYPs). Required for the maintenance of uterine histoarchitecture and normal female reproductive lifespan (By similarity). Intracellular heme chaperone. Regulates heme synthesis via interactions with FECH and acts as a heme donor for at least some hemoproteins (PubMed: 27599036). Forms a ternary complex with TMEM97 receptor and low density lipid receptor/LDLR, which increases LDLR-mediated LDL lipoprotein internalization (PubMed: 30443021).

Cellular Location	Microsome membrane {ECO:0000250 UniProtKB:Q95250}; Single-pass membrane protein. Smooth endoplasmic reticulum membrane; Single-pass membrane protein. Mitochondrion outer membrane {ECO:0000250 UniProtKB:O55022}; Single-pass membrane protein; Extracellular side {ECO:0000250 UniProtKB:O55022} Secreted Note=Localized at cell membrane, probably in lipid rafts, in serum- starved conditions.
Tissue Location	Detected in urine (at protein level) (PubMed:36213313, PubMed:37453717). Expressed by endometrial glands and stroma (at protein level) (PubMed:23793472). Widely expressed, with highest expression in liver and kidney.

References

Peluso,J.J.,(2008)J.Clin.Endocrinol.Metab.93(5),1592-1599ReconstitutionandStorage:Forshorttermuse,storeat2-8Cupto1week.Forlongtermstorage,storeat-20Cinsmallaliquotstopreventfreeze-thawcycles.

Images



Human Intestine



WB Suggested Anti-PGRMC1 Antibody Titration: 0.2-1 μ g/ml
Positive Control: HepG2 cell lysate

Please note: All products are 'FOR RESEARCH USE ONLY. NOT FOR USE IN DIAGNOSTIC OR THERAPEUTIC PROCEDURES'.