

Tmed1 antibody - N-terminal region

Rabbit Polyclonal Antibody

Catalog # AI12712

Product Information

Application	WB
Primary Accession	Q5BK85
Other Accession	NM_001013432 , NP_001013450
Reactivity	Human, Mouse, Rat, Rabbit, Zebrafish, Pig, Dog, Guinea Pig, Horse, Bovine
Predicted	Human, Mouse, Rat, Dog, Guinea Pig, Bovine
Host	Rabbit
Clonality	Polyclonal
Calculated MW	25210

Additional Information

Gene ID	315461
Alias Symbol	Il1rl1l, MGC108769, Tmed1
Other Names	Transmembrane emp24 domain-containing protein 1, Interleukin-1 receptor-like 1 ligand, p24 family protein gamma-1, p24gamma1, Tmed1, Il1rl1l
Format	Liquid. Purified antibody supplied in 1x PBS buffer with 0.09% (w/v) sodium azide and 2% sucrose.
Reconstitution & Storage	Add 50 ul of distilled water. Final anti-Tmed1 antibody concentration is 1 mg/ml in PBS buffer with 2% sucrose. For longer periods of storage, store at 20°C. Avoid repeat freeze-thaw cycles.
Precautions	Tmed1 antibody - N-terminal region is for research use only and not for use in diagnostic or therapeutic procedures.

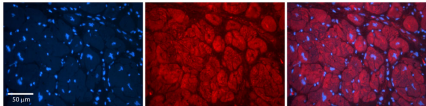
Protein Information

Name	Tmed1
Synonyms	Il1rl1l
Function	Potential role in vesicular protein trafficking, mainly in the early secretory pathway. May act as a cargo receptor at the luminal side for incorporation of secretory cargo molecules into transport vesicles and may be involved in vesicle coat formation at the cytoplasmic side. Plays a positive role in IL-33-mediated IL-8 and IL-6 production by interacting with interleukin-33 receptor IL1RL1. Plays also a role in the modulation of innate immune signaling through the cGAS-STING pathway by interacting with RNF26.

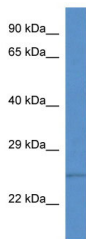
Cellular Location

Cell membrane {ECO:0000250|UniProtKB:Q13445}; Single-pass type I membrane protein. Endoplasmic reticulum membrane {ECO:0000250|UniProtKB:Q13445}; Single-pass type I membrane protein. Golgi apparatus, cis-Golgi network membrane {ECO:0000250|UniProtKB:Q13445}; Single-pass type I membrane protein. Endoplasmic reticulum-Golgi intermediate compartment membrane {ECO:0000250|UniProtKB:Q13445}; Single-pass type I membrane protein

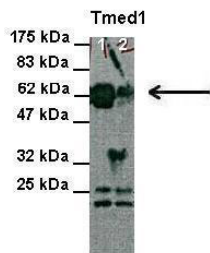
Images



Rabbit Anti-Tmed1 Antibody
Formalin Fixed Paraffin Embedded Tissue: Human Adult heart
Observed Staining: Cytoplasmic (resembles Golgi)
Primary Antibody
Concentration: 1:600
Secondary Antibody: Donkey anti-Rabbit-Cy2/3
Secondary Antibody
Concentration: 1:200
Magnification: 20X
Exposure Time: 0.5 s 2.0 sec
Protocol located in Reviews and Data.

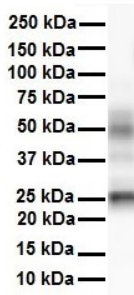


WB Suggested Anti-Tmed1 Antibody Titration: 1.0 µg/ml
Positive Control: Rat Lung



Lanes: Lane 1 and 2: 30 ug HEK-293 cell lysate
Primary Antibody Dilution: 1:1000
Secondary Antibody: Anti-Rabbit HRP
Secondary Antibody Dilution: 1:2000
Gene Name: Tmed1
Submitted by: Anonymous

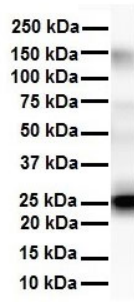
See Immunoblot 2 Data and Customer Feedback for more information



WB Suggested Anti-Tmed1 antibody Titration: 1 µg/ml
Sample Type: Human heart

WB Suggested Anti-Tmed1 antibody Titration: 1 µg/ml

Sample Type: Human liver



Please note: All products are 'FOR RESEARCH USE ONLY. NOT FOR USE IN DIAGNOSTIC OR THERAPEUTIC PROCEDURES'.