

# RER1 antibody - middle region

Rabbit Polyclonal Antibody  
Catalog # AI12717

## Product Information

---

<b>Application</b>	WB, IHC
<b>Primary Accession</b>	<a href="#">O15258</a>
<b>Other Accession</b>	<a href="#">NM_007033</a> , <a href="#">NP_008964</a>
<b>Reactivity</b>	Human, Mouse, Rat, Rabbit, Zebrafish, Dog, Guinea Pig, Horse, Bovine
<b>Predicted</b>	Human, Mouse, Rat, Rabbit, Zebrafish, Chicken, Dog, Bovine
<b>Host</b>	Rabbit
<b>Clonality</b>	Polyclonal
<b>Calculated MW</b>	23 KDa

## Additional Information

---

<b>Alias Symbol</b>	RP4-740C4.2
<b>Other Names</b>	Protein RER1, RER1
<b>Format</b>	Liquid. Purified antibody supplied in 1x PBS buffer with 0.09% (w/v) sodium azide and 2% sucrose.
<b>Reconstitution &amp; Storage</b>	Add 50 ul of distilled water. Final anti-RER1 antibody concentration is 1 mg/ml in PBS buffer with 2% sucrose. For longer periods of storage, store at 20°C. Avoid repeat freeze-thaw cycles.
<b>Precautions</b>	RER1 antibody - middle region is for research use only and not for use in diagnostic or therapeutic procedures.

## Protein Information

---

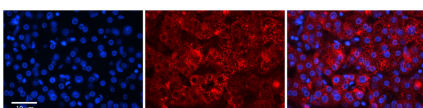
## References

---

Kaether, C., (2007) EMBO Rep. 8(8), 743-748 Reconstitution and Storage: For short term use, store at 2-8°C up to 1 week. For long term storage, store at -20°C in small aliquots to prevent freeze-thaw cycles.

## Images

---



Rabbit Anti-RER1 Antibody  
Formalin Fixed Paraffin Embedded Tissue: Human Adult Liver  
Observed Staining: Cytoplasm in hepatocytes, strong signal, very wide tissue distribution  
Primary Antibody

Concentration: 1:100  
Secondary Antibody: Donkey anti-Rabbit-Cy3  
Secondary Antibody  
Concentration: 1:200  
Magnification: 20X  
Exposure Time: 0.5 sec 2.0 sec  
Protocol located in Reviews and Data.



WB Suggested Anti-RER1 Antibody Titration: 0.2-1 µg/ml  
ELISA Titer: 1:62500  
Positive Control: 293T cell lysate

Please note: All products are 'FOR RESEARCH USE ONLY. NOT FOR USE IN DIAGNOSTIC OR THERAPEUTIC PROCEDURES'.