

NRM antibody - N-terminal region

Rabbit Polyclonal Antibody

Catalog # AI12721

Product Information

Application	WB
Primary Accession	Q8IXM6
Other Accession	NM_007243 , NP_009174
Reactivity	Human, Mouse, Rat, Rabbit, Pig, Dog, Horse, Bovine
Predicted	Human, Mouse, Rat, Pig
Host	Rabbit
Clonality	Polyclonal
Calculated MW	29379

Additional Information

Gene ID	11270
Alias Symbol	NRM29
Other Names	Nurim, Nuclear envelope membrane protein, Nuclear rim protein, NRM, NRM29
Format	Liquid. Purified antibody supplied in 1x PBS buffer with 0.09% (w/v) sodium azide and 2% sucrose.
Reconstitution & Storage	Add 50 ul of distilled water. Final anti-NRM antibody concentration is 1 mg/ml in PBS buffer with 2% sucrose. For longer periods of storage, store at 20°C. Avoid repeat freeze-thaw cycles.
Precautions	NRM antibody - N-terminal region is for research use only and not for use in diagnostic or therapeutic procedures.

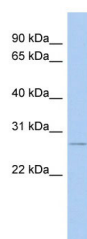
Protein Information

Name	NRM
Synonyms	NRM29
Cellular Location	Nucleus inner membrane; Multi-pass membrane protein

References

Shiina, T., (2006) Genetics 173(3), 1555-1570
Reconstitution and Storage: For short term use, store at 2-8°C up to 1 week. For long term storage, store at -20°C in small aliquots to prevent freeze-thaw cycles.

Images



WB Suggested Anti-NRM Antibody Titration: 0.2-1 $\mu\text{g/ml}$

ELISA Titer: 1:62500

Positive Control: Human Small Intestine

Please note: All products are 'FOR RESEARCH USE ONLY. NOT FOR USE IN DIAGNOSTIC OR THERAPEUTIC PROCEDURES'.