

Bace1 antibody - middle region

Rabbit Polyclonal Antibody

Catalog # AI12723

Product Information

Application	WB
Primary Accession	P56818
Other Accession	NM_011792 , NP_035922
Reactivity	Human, Mouse, Rat, Rabbit, Zebrafish, Pig, Dog, Guinea Pig, Horse, Bovine
Predicted	Human, Mouse, Rat, Rabbit, Zebrafish, Pig, Chicken, Guinea Pig, Horse, Bovine
Host	Rabbit
Clonality	Polyclonal
Calculated MW	55748

Additional Information

Gene ID	23821
Alias Symbol	C76936
Other Names	Beta-secretase 1, 3.4.23.46, Aspartyl protease 2, ASP2, Asp 2, Beta-site amyloid precursor protein cleaving enzyme 1, Beta-site APP cleaving enzyme 1, Memapsin-2, Membrane-associated aspartic protease 2, Bace1, Bace
Format	Liquid. Purified antibody supplied in 1x PBS buffer with 0.09% (w/v) sodium azide and 2% sucrose.
Reconstitution & Storage	Add 50 ul of distilled water. Final anti-Bace1 antibody concentration is 1 mg/ml in PBS buffer with 2% sucrose. For longer periods of storage, store at 20°C. Avoid repeat freeze-thaw cycles.
Precautions	Bace1 antibody - middle region is for research use only and not for use in diagnostic or therapeutic procedures.

Protein Information

Name	Bace1 {ECO:0000312 MGI:MGI:1346542}
Synonyms	Bace
Function	Responsible for the proteolytic processing of the amyloid precursor protein (APP) (PubMed: 29325091). Cleaves at the N-terminus of the A-beta peptide sequence, between residues 671 and 672 of APP, leads to the generation and extracellular release of beta-cleaved soluble APP, and a corresponding cell-associated C-terminal fragment which is later released by gamma-secretase (PubMed: 29325091). Cleaves CHL1 (PubMed: 29325091).

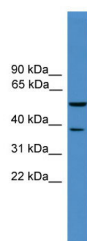
Cellular Location

Cell membrane {ECO:0000250|UniProtKB:P56817}; Single-pass type I membrane protein. Golgi apparatus, trans-Golgi network. Endoplasmic reticulum {ECO:0000250|UniProtKB:P56817}. Endosome. Late endosome. Early endosome. Cell surface. Cytoplasmic vesicle membrane {ECO:0000250|UniProtKB:P56817}. Membrane raft. Lysosome Recycling endosome. Cell projection, axon. Cell projection, dendrite.
Note=Predominantly localized to the later Golgi/trans-Golgi network (TGN) and minimally detectable in the early Golgi compartments. A small portion is also found in the endoplasmic reticulum, endosomes and on the cell surface (By similarity). Colocalization with APP in early endosomes is due to addition of bisecting N-acetylglucosamine which blocks targeting to late endosomes and lysosomes (PubMed:25592972). Retrogradly transported from endosomal compartments to the trans-Golgi network in a phosphorylation- and GGA1-dependent manner (By similarity) {ECO:0000250|UniProtKB:P56817, ECO:0000269|PubMed:25592972}

Tissue Location

Expressed in the brain, specifically in neurons and astrocytes (at protein level).

Images



WB Suggested Anti-Bace1 Antibody Titration: 0.2-1 µg/ml
ELISA Titer: 1:1562500
Positive Control: Mouse Heart

Please note: All products are 'FOR RESEARCH USE ONLY. NOT FOR USE IN DIAGNOSTIC OR THERAPEUTIC PROCEDURES'.