

Tram2 Antibody - C-terminal region

Rabbit Polyclonal Antibody

Catalog # AI12725

Product Information

Application	WB
Primary Accession	Q924Z5
Other Accession	NM_177409 , NP_803128
Reactivity	Human, Mouse, Rat, Rabbit, Zebrafish, Pig, Dog, Guinea Pig, Horse, Bovine
Predicted	Human, Mouse, Rat, Rabbit, Zebrafish, Pig, Dog, Guinea Pig, Horse, Bovine
Host	Rabbit
Clonality	Polyclonal
Calculated MW	43183

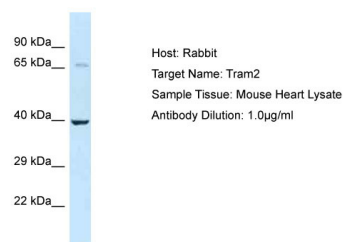
Additional Information

Gene ID	170829
Alias Symbol	C330003D03Rik
Other Names	Translocating chain-associated membrane protein 2, Tram2
Format	Liquid. Purified antibody supplied in 1x PBS buffer with 0.09% (w/v) sodium azide and 2% sucrose.
Reconstitution & Storage	Add 50 µl of distilled water. Final Anti-Tram2 antibody concentration is 1 mg/ml in PBS buffer with 2% sucrose. For longer periods of storage, store at -20°C. Avoid repeat freeze-thaw cycles.
Precautions	Tram2 Antibody - C-terminal region is for research use only and not for use in diagnostic or therapeutic procedures.

Protein Information

Name	Tram2
Function	Necessary for collagen type I synthesis. May couple the activity of the ER Ca(2+) pump SERCA2B with the activity of the translocon. This coupling may increase the local Ca(2+) concentration at the site of collagen synthesis, and a high Ca(2+) concentration may be necessary for the function of molecular chaperones involved in collagen folding. Required for proper insertion of the first transmembrane helix N-terminus of TM4SF20 into the ER lumen, may act as a ceramide sensor for regulated alternative translocation (RAT).
Cellular Location	Membrane; Multi-pass membrane protein

Images



Host: Rabbit
Target Name: Tram2
Sample Tissue: Mouse Heart Lysate
Antibody Dilution: 1.0µg/ml

Host: Rabbit
Target Name: Tram2
Sample Tissue: Mouse Heart lysates
Antibody Dilution: 1.0µg/ml

Please note: All products are 'FOR RESEARCH USE ONLY. NOT FOR USE IN DIAGNOSTIC OR THERAPEUTIC PROCEDURES'.