

# ST6GALNAC6 antibody - C-terminal region

Rabbit Polyclonal Antibody

Catalog # AI12730

## Product Information

<b>Application</b>	WB
<b>Primary Accession</b>	<a href="#">Q969X2</a>
<b>Other Accession</b>	<a href="#">NM_013443</a> , <a href="#">NP_038471</a>
<b>Reactivity</b>	Human, Mouse, Rat, Rabbit, Pig, Dog, Guinea Pig, Horse, Bovine
<b>Predicted</b>	Human, Mouse, Rabbit, Pig, Dog, Guinea Pig, Horse
<b>Host</b>	Rabbit
<b>Clonality</b>	Polyclonal
<b>Calculated MW</b>	38068

## Additional Information

<b>Gene ID</b>	30815
<b>Alias Symbol</b>	RP11-203J24.3, SIAT7F, ST6GALNACVI
<b>Other Names</b>	Alpha-N-acetylgalactosaminide alpha-2, 6-sialyltransferase 6, 2.4.99.-, GalNAc alpha-2, 6-sialyltransferase VI, ST6GalNAc VI, ST6GalNAcVI, hST6GalNAc VI, Sialyltransferase 7F, SIAT7-F, ST6GALNAC6, SIAT7F
<b>Format</b>	Liquid. Purified antibody supplied in 1x PBS buffer with 0.09% (w/v) sodium azide and 2% sucrose.
<b>Reconstitution &amp; Storage</b>	Add 50 ul of distilled water. Final anti-ST6GALNAC6 antibody concentration is 1 mg/ml in PBS buffer with 2% sucrose. For longer periods of storage, store at 20°C. Avoid repeat freeze-thaw cycles.
<b>Precautions</b>	ST6GALNAC6 antibody - C-terminal region is for research use only and not for use in diagnostic or therapeutic procedures.

## Protein Information

<b>Name</b>	ST6GALNAC6
<b>Synonyms</b>	SIAT7F
<b>Function</b>	Transfers the sialyl group (N-acetyl-alpha-neuraminy) or NeuAc) from CMP-NeuAc onto glycoproteins and glycolipids, forming an alpha-2,6-linkage. Produces branched type disialyl structures by transfer of a sialyl group onto the GalNAc or GlcNAc residue inside backbone core chains having a terminal sialic acid with an alpha-2,3- linkage on Gal. ST6GalNAcVI prefers glycolipids to glycoproteins, predominantly catalyzing the biosynthesis of ganglioside GD1alpha from GM1b (PubMed: <a href="#">12668675</a> , PubMed: <a href="#">17123352</a> ). Besides

GMb1, MSGG and other glycolipids, it shows activity towards sialyl Lc4Cer generating disialyl Lc4Cer, which can lead to the synthesis of disialyl Lewis a (Le(a)), suggested to be a cancer-associated antigen (PubMed:[12668675](#)). Also has activity toward GD1a and GT1b, and can generate DSGG (disialylgalactosylgloboside) from MSGG (monosialylgalactosylgloboside) (By similarity).

**Cellular Location**

Golgi apparatus membrane; Single- pass type II membrane protein

**Tissue Location**

Expressed in kidney, in proximal tubule epithelial cells. Expressed in colon cell lines.

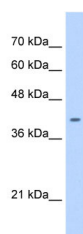
## References

---

Senda,M.,(2007)Biochem.J.402(3),459-470ReconstitutionandStorage:Forshorttermuse,storeat2-8Cupto1week. Forlongtermstorage,storeat-20Cinsmallaliquotstopreventfreeze-thawcycles.

## Images

---



WB Suggested Anti-ST6GALNAC6 Antibody Titration: 0.2-1  
µg/ml  
Positive Control: HepG2 cell lysate

Please note: All products are 'FOR RESEARCH USE ONLY. NOT FOR USE IN DIAGNOSTIC OR THERAPEUTIC PROCEDURES'.