

Bmp10 antibody - N-terminal region

Rabbit Polyclonal Antibody

Catalog # AI12739

Product Information

Application	WB
Primary Accession	Q4AEG6
Other Accession	NM_001031824 , NP_001026994
Reactivity	Human, Mouse, Rat, Rabbit, Zebrafish, Pig, Dog, Guinea Pig, Horse, Bovine
Predicted	Human, Mouse, Rat, Rabbit, Zebrafish, Pig, Chicken, Dog, Horse, Bovine
Host	Rabbit
Clonality	Polyclonal
Calculated MW	47767

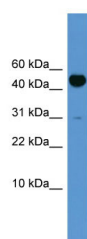
Additional Information

Gene ID	500245
Alias Symbol	Bmp10
Other Names	Bone morphogenetic protein 10, BMP-10, Bmp10 {ECO:0000312 EMBL:BAE16990.1, ECO:0000312 RGD:1562986}
Format	Liquid. Purified antibody supplied in 1x PBS buffer with 0.09% (w/v) sodium azide and 2% sucrose.
Reconstitution & Storage	Add 50 ul of distilled water. Final anti-Bmp10 antibody concentration is 1 mg/ml in PBS buffer with 2% sucrose. For longer periods of storage, store at 20°C. Avoid repeat freeze-thaw cycles.
Precautions	Bmp10 antibody - N-terminal region is for research use only and not for use in diagnostic or therapeutic procedures.

Protein Information

Name	Bmp10 {ECO:0000312 EMBL:BAE16990.1, ECO:0000312 RGD:1562986}
Function	Required for maintaining the proliferative activity of embryonic cardiomyocytes by preventing premature activation of the negative cell cycle regulator CDKN1C/p57KIP and maintaining the required expression levels of cardiogenic factors such as MEF2C and NKX2-5. Acts as a ligand for ACVRL1/ALK1, BMPR1A/ALK3 and BMPR1B/ALK6, leading to activation of SMAD1, SMAD5 and SMAD8 transcription factors. Inhibits endothelial cell migration and growth. May reduce cell migration and cell matrix adhesion in breast cancer cell lines.
Cellular Location	Secreted {ECO:0000250 UniProtKB:P12643}.

Images



WB Suggested Anti-Bmp10 Antibody Titration: 0.2-1 µg/ml
ELISA Titer: 1:312500
Positive Control: Rat Brain

Please note: All products are 'FOR RESEARCH USE ONLY. NOT FOR USE IN DIAGNOSTIC OR THERAPEUTIC PROCEDURES'.