

Golim4 antibody - C-terminal region

Rabbit Polyclonal Antibody

Catalog # AI12740

Product Information

Application	WB
Primary Accession	Q5BJK8
Other Accession	NM_001191567 , NP_001178496
Reactivity	Human, Mouse, Rat, Rabbit, Zebrafish, Pig, Dog, Guinea Pig, Horse, Bovine
Predicted	Human, Mouse, Rat, Rabbit, Zebrafish, Pig, Chicken, Dog, Guinea Pig, Horse, Bovine
Host	Rabbit
Clonality	Polyclonal
Calculated MW	76597

Additional Information

Gene ID	310526
Alias Symbol	Golph4
Other Names	Golgi integral membrane protein 4, Golgi integral membrane protein, cis, GIMPC, Golgi phosphoprotein 4, Golim4, Gimpc, Golph4
Format	Liquid. Purified antibody supplied in 1x PBS buffer with 0.09% (w/v) sodium azide and 2% sucrose.
Reconstitution & Storage	Add 50 ul of distilled water. Final anti-Golim4 antibody concentration is 1 mg/ml in PBS buffer with 2% sucrose. For longer periods of storage, store at 20°C. Avoid repeat freeze-thaw cycles.
Precautions	Golim4 antibody - C-terminal region is for research use only and not for use in diagnostic or therapeutic procedures.

Protein Information

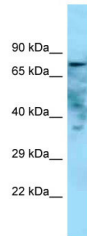
Name	Golim4
Synonyms	Gimpc, Golph4
Function	Plays a role in endosome to Golgi protein trafficking; mediates protein transport along the late endosome-bypass pathway from the early endosome to the Golgi.
Cellular Location	Golgi apparatus, Golgi stack membrane; Single-pass type II membrane protein. Endosome membrane; Single-pass type II membrane protein. Membrane {ECO:0000250 UniProtKB:O00461}; Lipid-anchor

{ECO:0000250|UniProtKB:O00461}. Note=Localizes to cis and medial Golgi cisternae. Probably cycles between early Golgi and distal compartments like endosome

Tissue Location

Expressed in liver, pancreas and pituitary (at protein level).

Images



WB Suggested Anti-Golim4 Antibody Titration: 1.0 µg/ml
Positive Control: Rat Muscle

Please note: All products are 'FOR RESEARCH USE ONLY. NOT FOR USE IN DIAGNOSTIC OR THERAPEUTIC PROCEDURES'.