

ATP11B antibody - N-terminal region

Rabbit Polyclonal Antibody

Catalog # AI12742

Product Information

| | |
|--------------------------|---|
| Application | WB |
| Primary Accession | Q9Y2G3 |
| Other Accession | NM_014616 , NP_055431 |
| Reactivity | Human, Mouse, Rat, Rabbit, Zebrafish, Pig, Dog, Guinea Pig, Horse, Bovine |
| Predicted | Mouse, Rat, Chicken, Guinea Pig, Horse, Bovine |
| Host | Rabbit |
| Clonality | Polyclonal |
| Calculated MW | 134190 |

Additional Information

| | |
|---|--|
| Gene ID | 23200 |
| Alias Symbol Other Names | ATPIF, ATPIR, DKFZP434J238, DKFZP434N1615, KIAA0956, MGC46576 Probable phospholipid-transporting ATPase IF, 3.6.3.1, ATPase IR, ATPase class VI type 11B, P4-ATPase flippase complex alpha subunit ATP11B, ATP11B, ATPIF, ATPIR, KIAA0956 |
| Format | Liquid. Purified antibody supplied in 1x PBS buffer with 0.09% (w/v) sodium azide and 2% sucrose. |
| Reconstitution & Storage | Add 50 ul of distilled water. Final anti-ATP11B antibody concentration is 1 mg/ml in PBS buffer with 2% sucrose. For longer periods of storage, store at 20°C. Avoid repeat freeze-thaw cycles. |
| Precautions | ATP11B antibody - N-terminal region is for research use only and not for use in diagnostic or therapeutic procedures. |

Protein Information

| | |
|-----------------|---|
| Name | ATP11B |
| Synonyms | ATPIF, ATPIR, KIAA0956 |
| Function | Catalytic component of a P4-ATPase flippase complex which catalyzes the hydrolysis of ATP coupled to the transport of aminophospholipids, phosphatidylserines (PS) and phosphatidylethanolamines (PE), from the outer to the inner leaflet of intracellular membranes (PubMed: 30018401). May contribute to the maintenance of membrane lipid asymmetry in endosome compartment (PubMed: 30018401). |

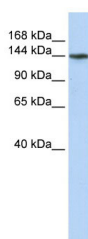
Cellular Location

Recycling endosome membrane; Multi-pass membrane protein. Early endosome. Endoplasmic reticulum. Golgi apparatus, trans-Golgi network. Note=Exit from the endoplasmic reticulum requires the presence of TMEM30A, but not TMEM30B (PubMed:21914794). In the presence of TMEM30A, mainly located in recycling endosomes (PubMed:21914794).

References

Muzny,D.M.,(2006)Nature440(7088),1194-1198ReconstitutionandStorage:Forshorttermuse,storeat2-8Cupto1 week.Forlongtermstorage,storeat-20Cin small aliquots to prevent freeze-thaw cycles.

Images



WB Suggested Anti-ATP11B Antibody Titration: 0.2-1
µg/ml
ELISA Titer: 1:312500
Positive Control: Human Liver

Please note: All products are 'FOR RESEARCH USE ONLY. NOT FOR USE IN DIAGNOSTIC OR THERAPEUTIC PROCEDURES'.