

NSDHL antibody - middle region

Rabbit Polyclonal Antibody

Catalog # AI12754

Product Information

Application	WB
Primary Accession	Q15738
Other Accession	NM_015922 , NP_057006
Reactivity	Human, Mouse, Rat, Rabbit, Zebrafish, Pig, Dog, Guinea Pig, Horse, Bovine
Predicted	Human, Mouse, Rat, Rabbit, Zebrafish, Pig, Chicken, Dog, Guinea Pig, Horse
Host	Rabbit
Clonality	Polyclonal
Calculated MW	41900

Additional Information

Gene ID	50814
Alias Symbol	H105E3, XAP104, SDR31E1
Other Names	Sterol-4-alpha-carboxylate 3-dehydrogenase, decarboxylating, 1.1.1.170, Protein H105e3, NSDHL, H105E3
Format	Liquid. Purified antibody supplied in 1x PBS buffer with 0.09% (w/v) sodium azide and 2% sucrose.
Reconstitution & Storage	Add 100 ul of distilled water. Final anti-NSDHL antibody concentration is 1 mg/ml in PBS buffer with 2% sucrose. For longer periods of storage, store at 20°C. Avoid repeat freeze-thaw cycles.
Precautions	NSDHL antibody - middle region is for research use only and not for use in diagnostic or therapeutic procedures.

Protein Information

Name	NSDHL
Synonyms	H105E3
Function	Catalyzes the NAD(P)(+)-dependent oxidative decarboxylation of the C4 methyl groups of 4-alpha-carboxysterols in post-squalene cholesterol biosynthesis (By similarity). Also plays a role in the regulation of the endocytic trafficking of EGFR (By similarity).
Cellular Location	Endoplasmic reticulum membrane; Single-pass membrane protein. Lipid droplet {ECO:0000250 UniProtKB:Q9R1J0} Note=Trafficking through the Golgi is necessary for ER membrane localization. {ECO:0000250 UniProtKB:Q9R1J0}

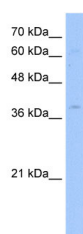
Tissue Location

Brain, heart, liver, lung, kidney, skin and placenta

References

Guggenberger, C., J. Steroid Biochem. Mol. Biol. 104(3-5), 105-109 (2007) Reconstitution and Storage: For short term use, store at 2-8°C up to 1 week. For long term storage, store at -20°C in small aliquots to prevent freeze-thaw cycles.

Images



WB Suggested Anti-NSDHL Antibody Titration: 2.5 µg/ml
Positive Control: HepG2 cell lysate
NSDHL is strongly supported by BioGPS gene expression data to be expressed in Human HepG2 cells

Please note: All products are 'FOR RESEARCH USE ONLY. NOT FOR USE IN DIAGNOSTIC OR THERAPEUTIC PROCEDURES'.