

# Hdhd2 Antibody - N-terminal region

Rabbit Polyclonal Antibody

Catalog # AI12759

## Product Information

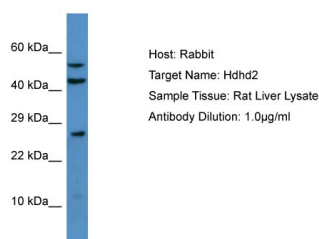
<b>Application</b>	WB
<b>Primary Accession</b>	<a href="#">Q6QI86</a>
<b>Other Accession</b>	<a href="#">NM_001014151</a> , <a href="#">NP_001014173</a>
<b>Reactivity</b>	Human, Mouse, Rat, Rabbit, Zebrafish, Pig, Goat, Dog, Guinea Pig, Horse, Bovine, Yeast
<b>Predicted</b>	Human, Mouse, Rat, Rabbit, Zebrafish, Pig, Goat, Dog, Guinea Pig, Bovine, Yeast
<b>Host</b>	Rabbit
<b>Clonality</b>	Polyclonal
<b>Calculated MW</b>	42 KDa

## Additional Information

<b>Alias Symbol</b>	Ier3ip1, LRRG00122, RGD1308579
<b>Format</b>	Liquid. Purified antibody supplied in 1x PBS buffer with 0.09% (w/v) sodium azide and 2% sucrose.
<b>Reconstitution &amp; Storage</b>	Add 50 &mu; l of distilled water. Final Anti-Hdhd2 antibody concentration is 1 mg/ml in PBS buffer with 2% sucrose. For longer periods of storage, store at -20°C. Avoid repeat freeze-thaw cycles.
<b>Precautions</b>	Hdhd2 Antibody - N-terminal region is for research use only and not for use in diagnostic or therapeutic procedures.

## Protein Information

## Images



Host: Rabbit  
Target Name: Hdhd2  
Sample Tissue: Rat Liver lysates  
Antibody Dilution: 1.0µg/ml

Please note: All products are 'FOR RESEARCH USE ONLY. NOT FOR USE IN DIAGNOSTIC OR THERAPEUTIC PROCEDURES'.