

C19orf56 antibody - N-terminal region

Rabbit Polyclonal Antibody

Catalog # AI12761

Product Information

Application	WB
Primary Accession	Q9Y284
Other Accession	NM_016145 , NP_057229
Reactivity	Human, Mouse, Rat, Rabbit, Pig, Dog, Guinea Pig, Horse, Bovine
Predicted	Rabbit, Pig, Horse
Host	Rabbit
Clonality	Polyclonal
Calculated MW	12068

Additional Information

Gene ID	51398
Alias Symbol	PTD008, C19orf56
Other Names	Protein Asterix, WD repeat domain 83 opposite strand, WDR83 opposite strand, WDR83OS, C19orf56
Format	Liquid. Purified antibody supplied in 1x PBS buffer with 0.09% (w/v) sodium azide and 2% sucrose.
Reconstitution & Storage	Add 50 ul of distilled water. Final anti-C19orf56 antibody concentration is 1 mg/ml in PBS buffer with 2% sucrose. For longer periods of storage, store at 20°C. Avoid repeat freeze-thaw cycles.
Precautions	C19orf56 antibody - N-terminal region is for research use only and not for use in diagnostic or therapeutic procedures.

Protein Information

Name	WDR83OS (HGNC:30203)
Synonyms	C19orf56
Function	Component of the multi-pass translocon (MPT) complex that mediates insertion of multi-pass membrane proteins into the lipid bilayer of membranes (PubMed: 12475939 , PubMed: 32814900 , PubMed: 36261522). The MPT complex takes over after the SEC61 complex: following membrane insertion of the first few transmembrane segments of proteins by the SEC61 complex, the MPT complex occludes the lateral gate of the SEC61 complex to promote insertion of subsequent transmembrane regions (PubMed: 32814900 , PubMed: 36261522). Within the MPT complex, the PAT

subcomplex sequesters any highly polar regions in the transmembrane domains away from the non-polar membrane environment until they can be buried in the interior of the fully assembled protein (By similarity). Within the PAT subcomplex, WDR83OS/Asterix binds to and redirects the substrate to a location behind the SEC61 complex (By similarity).

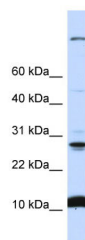
Cellular Location

Endoplasmic reticulum membrane; Multi-pass membrane protein

References

Gerhard,D.S.,GenomeRes.14(10B),2121-2127(2004)ReconstitutionandStorage:Forshorttermuse,storeat2-8Cupto1week.Forlongtermstorage,storeat-20Cinsmallaliquotstopreventfreeze-thawcycles.

Images



WB Suggested Anti-C19orf56 Antibody Titration: 0.2-1 $\mu\text{g/ml}$
ELISA Titer: 1:312500
Positive Control: 721_B cell lysate
WDR83OS is supported by BioGPS gene expression data to be expressed in 721_B

Please note: All products are 'FOR RESEARCH USE ONLY. NOT FOR USE IN DIAGNOSTIC OR THERAPEUTIC PROCEDURES'.