

Scara3 antibody - middle region

Rabbit Polyclonal Antibody

Catalog # AI12764

Product Information

Application	WB
Primary Accession	Q8C850
Other Accession	NM_172604 , NP_766192
Reactivity	Human, Mouse, Rat, Rabbit, Pig, Dog, Horse, Bovine
Predicted	Rat, Rabbit, Dog, Horse, Bovine
Host	Rabbit
Clonality	Polyclonal
Calculated MW	65471

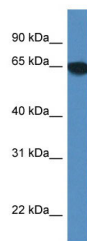
Additional Information

Gene ID	219151
Alias Symbol Other Names	APC7, C130058N24Rik, CSR, CSR1, MSLR1, MSRL1 Scavenger receptor class A member 3, Scara3
Format	Liquid. Purified antibody supplied in 1x PBS buffer with 0.09% (w/v) sodium azide and 2% sucrose.
Reconstitution & Storage	Add 50 ul of distilled water. Final anti-Scara3 antibody concentration is 1 mg/ml in PBS buffer with 2% sucrose. For longer periods of storage, store at 20°C. Avoid repeat freeze-thaw cycles.
Precautions	Scara3 antibody - middle region is for research use only and not for use in diagnostic or therapeutic procedures.

Protein Information

Name	Scara3
Function	Seems to protect cells by scavenging oxidative molecules or harmful products of oxidation.
Cellular Location	Endoplasmic reticulum membrane; Single-pass type II membrane protein. Golgi apparatus membrane; Single-pass type II membrane protein. Note=Endoplasmic reticulum and/or Golgi.

Images



WB Suggested Anti-Scara3 Antibody Titration: 1.0 µg/ml
Positive Control: Mouse Brain

Please note: All products are 'FOR RESEARCH USE ONLY. NOT FOR USE IN DIAGNOSTIC OR THERAPEUTIC PROCEDURES'.