

# TMEM69 antibody - middle region

Rabbit Polyclonal Antibody

Catalog # AI12768

## Product Information

---

<b>Application</b>	WB, IHC
<b>Primary Accession</b>	<a href="#">Q5SWH9</a>
<b>Other Accession</b>	<a href="#">NM_016486</a> , <a href="#">NP_057570</a>
<b>Reactivity</b>	Human, Mouse, Rat, Rabbit, Zebrafish, Dog, Guinea Pig, Horse
<b>Predicted</b>	Rat, Rabbit, Zebrafish, Chicken, Guinea Pig, Horse
<b>Host</b>	Rabbit
<b>Clonality</b>	Polyclonal
<b>Calculated MW</b>	27551

## Additional Information

---

<b>Gene ID</b>	51249
<b>Alias Symbol</b>	C1orf154, FLJ21029, MGC104183, RP11-767N6.4
<b>Other Names</b>	Transmembrane protein 69, TMEM69, C1orf154
<b>Format</b>	Liquid. Purified antibody supplied in 1x PBS buffer with 0.09% (w/v) sodium azide and 2% sucrose.
<b>Reconstitution &amp; Storage</b>	Add 50 ul of distilled water. Final anti-TMEM69 antibody concentration is 1 mg/ml in PBS buffer with 2% sucrose. For longer periods of storage, store at 20°C. Avoid repeat freeze-thaw cycles.
<b>Precautions</b>	TMEM69 antibody - middle region is for research use only and not for use in diagnostic or therapeutic procedures.

## Protein Information

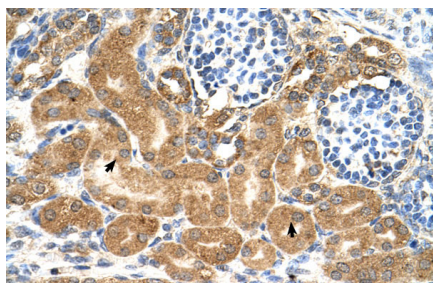
---

<b>Name</b>	TMEM69
<b>Synonyms</b>	C1orf154
<b>Cellular Location</b>	Membrane; Multi-pass membrane protein

## Images

---

Human kidney



WB Suggested Anti-TMEM69 Antibody Titration: 0.5µg/ml  
Positive Control: HepG2 cell lysate

Please note: All products are 'FOR RESEARCH USE ONLY. NOT FOR USE IN DIAGNOSTIC OR THERAPEUTIC PROCEDURES'.