

# RHBDL2 antibody - N-terminal region

Rabbit Polyclonal Antibody

Catalog # AI12781

## Product Information

---

<b>Application</b>	WB
<b>Primary Accession</b>	<a href="#">Q9NX52</a>
<b>Other Accession</b>	<a href="#">NM_017821</a> , <a href="#">NP_060291</a>
<b>Reactivity</b>	Human, Rat, Rabbit, Pig, Dog, Horse, Bovine
<b>Predicted</b>	Human, Rabbit, Pig, Dog, Horse
<b>Host</b>	Rabbit
<b>Clonality</b>	Polyclonal
<b>Calculated MW</b>	34021

## Additional Information

---

<b>Gene ID</b>	54933
<b>Alias Symbol</b>	MGC16997, RRP2
<b>Other Names</b>	Rhomboid-related protein 2, RRP2, 3.4.21.105, Rhomboid-like protein 2, Rhomboid-related protein 2, N-terminal fragment, NTF, Rhomboid-related protein 2, C-terminal fragment, CTF, RHBDL2
<b>Format</b>	Liquid. Purified antibody supplied in 1x PBS buffer with 0.09% (w/v) sodium azide and 2% sucrose.
<b>Reconstitution &amp; Storage</b>	Add 50 ul of distilled water. Final anti-RHBDL2 antibody concentration is 1 mg/ml in PBS buffer with 2% sucrose. For longer periods of storage, store at 20°C. Avoid repeat freeze-thaw cycles.
<b>Precautions</b>	RHBDL2 antibody - N-terminal region is for research use only and not for use in diagnostic or therapeutic procedures.

## Protein Information

---

<b>Name</b>	RHBDL2
<b>Function</b>	Involved in regulated intramembrane proteolysis and the subsequent release of functional polypeptides from their membrane anchors. Known substrate: EFNB3.
<b>Cellular Location</b>	[Rhomboid-related protein 2, C-terminal fragment]: Cell membrane; Multi-pass membrane protein

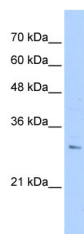
## References

---

Gregory, S.G., (2006) Nature 441 (7091), 315-321 Reconstitution and Storage: For short term use, store at 2-8°C up to 1 week. For long term storage, store at -20°C in small aliquots to prevent freeze-thaw cycles.

## Images

---



WB Suggested Anti-RHBDL2 Antibody Titration: 0.2-1  $\mu$ g/ml  
Positive Control: PANC1 cell lysate

Please note: All products are 'FOR RESEARCH USE ONLY. NOT FOR USE IN DIAGNOSTIC OR THERAPEUTIC PROCEDURES'.