

Tapbpl antibody - N-terminal region

Rabbit Polyclonal Antibody

Catalog # AI12787

Product Information

Application	WB
Primary Accession	Q8VD31
Other Accession	NM_145391 , NP_663366
Reactivity	Human, Mouse, Rat, Rabbit, Dog, Guinea Pig, Horse, Bovine
Predicted	Human, Rat, Rabbit, Pig, Dog, Guinea Pig, Horse, Bovine
Host	Rabbit
Clonality	Polyclonal
Calculated MW	48733

Additional Information

Gene ID	213233
Alias Symbol Other Names	BC017613, MGC27679, TAPBPL-R, Tapbplr Tapasin-related protein, TAPASIN-R, TAP-binding protein-like, TAP-binding protein-related protein, TAPBP-R, Tapasin-like, Tapbpl
Format	Liquid. Purified antibody supplied in 1x PBS buffer with 0.09% (w/v) sodium azide and 2% sucrose.
Reconstitution & Storage	Add 50 ul of distilled water. Final anti-Tapbpl antibody concentration is 1 mg/ml in PBS buffer with 2% sucrose. For longer periods of storage, store at 20°C. Avoid repeat freeze-thaw cycles.
Precautions	Tapbpl antibody - N-terminal region is for research use only and not for use in diagnostic or therapeutic procedures.

Protein Information

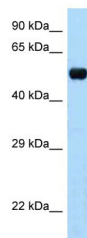
Name	Tapbpl
Function	Component of the antigen processing and presentation pathway, which binds to MHC class I coupled with beta2-microglobulin/B2M. Association between TAPBPR and MHC class I occurs in the absence of a functional peptide-loading complex (PLC). Expression seems to slow down and down-regulate MHC class I surface expression.
Cellular Location	Cell membrane {ECO:0000250 UniProtKB:Q9BX59}; Single-pass type I membrane protein. Endoplasmic reticulum membrane {ECO:0000250 UniProtKB:Q9BX59}; Single-pass type I membrane protein. Microsome membrane {ECO:0000250 UniProtKB:Q9BX59}; Single-pass type I

membrane protein {ECO:0000250|UniProtKB:Q9BX59}. Golgi apparatus membrane {ECO:0000250|UniProtKB:Q9BX59}; Single-pass type I membrane protein {ECO:0000250|UniProtKB:Q9BX59}. Note=Mainly found in endoplasmic reticulum but a minority is found on the cell surface {ECO:0000250|UniProtKB:Q9BX59}

Tissue Location

Widely expressed..

Images



WB Suggested Anti-Tapbpl Antibody Titration: 1.0 µg/ml
Positive Control: Mouse Brain

Please note: All products are 'FOR RESEARCH USE ONLY. NOT FOR USE IN DIAGNOSTIC OR THERAPEUTIC PROCEDURES'.